

Creating a New Advertisement

in Microsoft System Centre Configuration Manager

Prepared by: Vern Beecham
Created: 12 October 2010

i. Structure

1. **Development** – Used for testing and QA'ing application packages, contains sub folders for each area.
 - a. **Learning environments**
 - b. **TechSupport**
 - c. **CSI**
 - d. **Win7 Project**
 - e. **OSD Task Sequences**
2. **Pilot** - Used primarily for CSI for larger-scale pilot testing.
3. **Production** – advertisement has passed QA and UAT
 - a. **Folder for each manufacturer or application**

ii. Processes

1. **Getting an Advertisement into production** : an ITSM task is forwarded to CSI, and they will create the advertisement in this location

iii. Standards

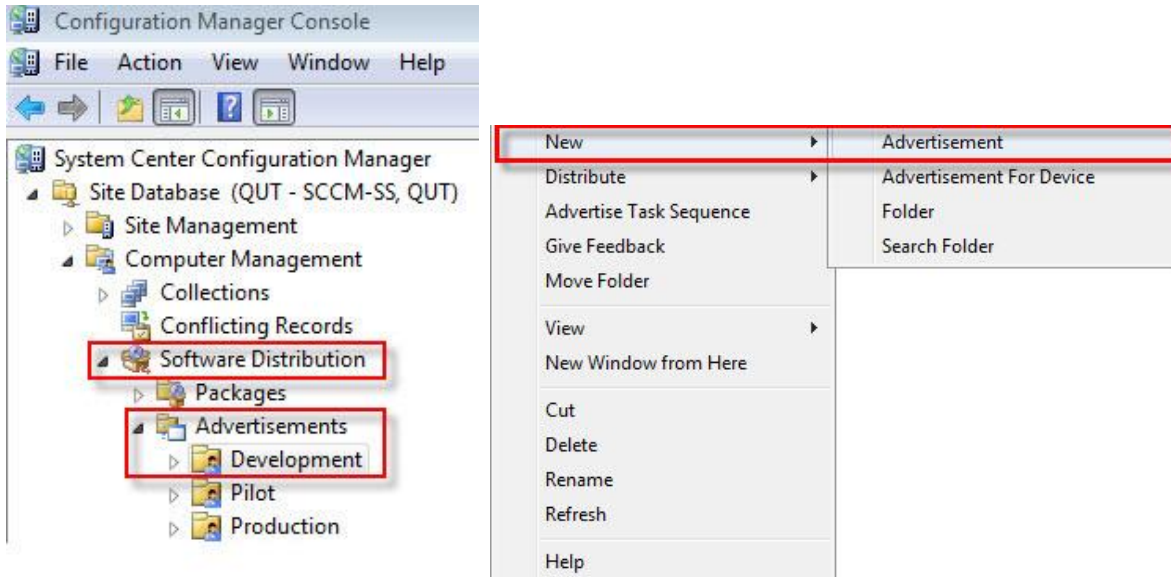
1. **Development**
 - a. **Naming convention:** DEV Area PackageName ProgramName
Example: DEV TS3 FrontRange ITSM 6.1.4.0 Self Install.
The naming convention for the advertisement should match the collection.
2. **Pilot** : CSI are the service owners of this area
 - a. **Naming convention:** Pilot PackageName: ProgramName
3. **Production** : CSI are the service owners of this area
 - a. **Naming convention:** PROD PackageName: ProgramName

Start Microsoft System Centre Configuration Manager (MS SCCM) console as an administrator using a dash admin account.

Expand Site Database ... Computer Management ...Software Distribution ... Advertisements.

“Right Click” on “Development”, (the area in which you will create a new advertisement),

This displays **New**, Hover on **New** to expand to **Advertisement**, Click on **“Advertisement”**



- **Development:** This area will be used for testing and QA procedures pertaining to new application packages.
- **Pilot:** This area will be used for larger scale pilot testing by CSI
- **Production:** This area will be used for advertisements that have passed QA and UA testing.

The “New Advertisement Wizard” is displayed, with the General Tab as shown below.

1. Name: (Max 100 characters)

- A required field: The Naming convention is
 - Dev – Development Example; DEV, Area, Package Name, Program Name
Eg. DEV W7P Adobe Flash Pro CS5 (Basic) – Self Install
 - Pilot-Pilot Group Testing Example; Pilot, Package Name, Program Name
Eg. PILOT Adobe Flash Pro CS5 (Basic) – Self Install
 - Prod – Production Example; Prod, Package Name, Program Name
Eg. PROD Adobe Fireworks CS5 – Self Install

2. Comment:

- A description of the advertisement (Max 127 characters)

3. Package:

- A required field; choose the package that contains the program that is to be deployed.

Go To 3.1 (Page 3)

4. Program:

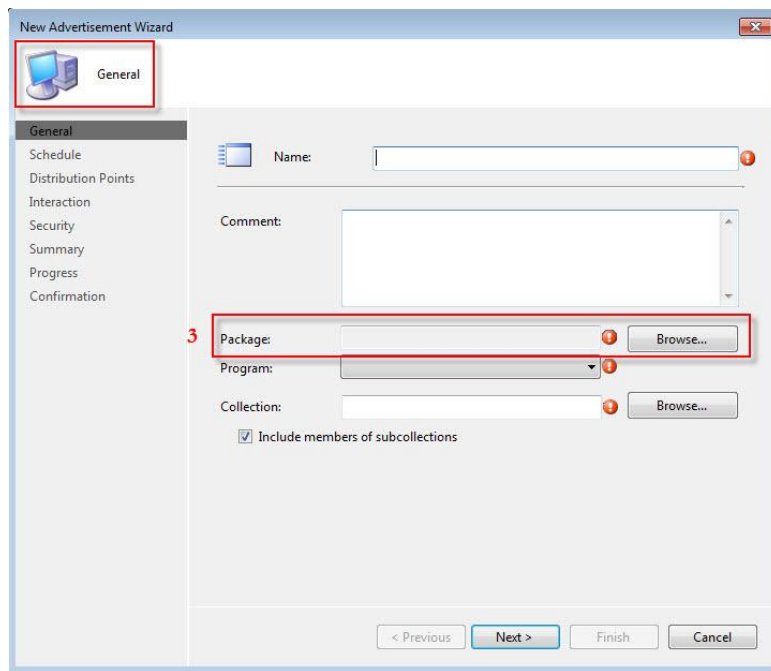
- A required field; specifies the program, from the package that is be advertised.
- **Go To 4.1 (Page 4)**

5. Collection:

- A required field; specifies the collect to be targeted by the advertisement.
- **Go To 5.1 (Page 4)**

3.1: Package:

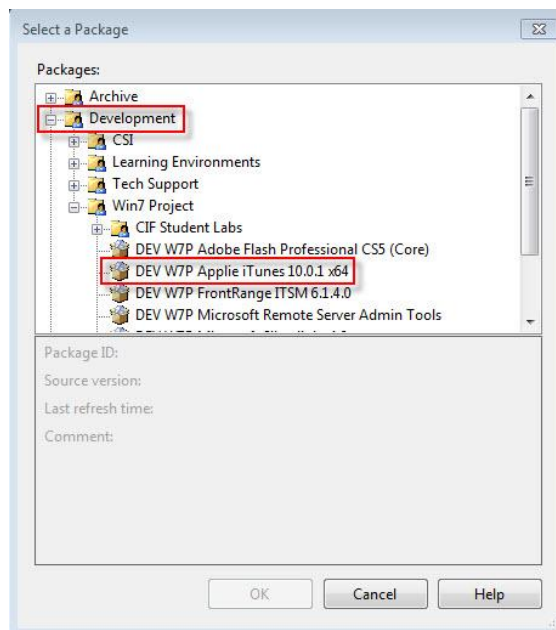
Click on **“Browse”**



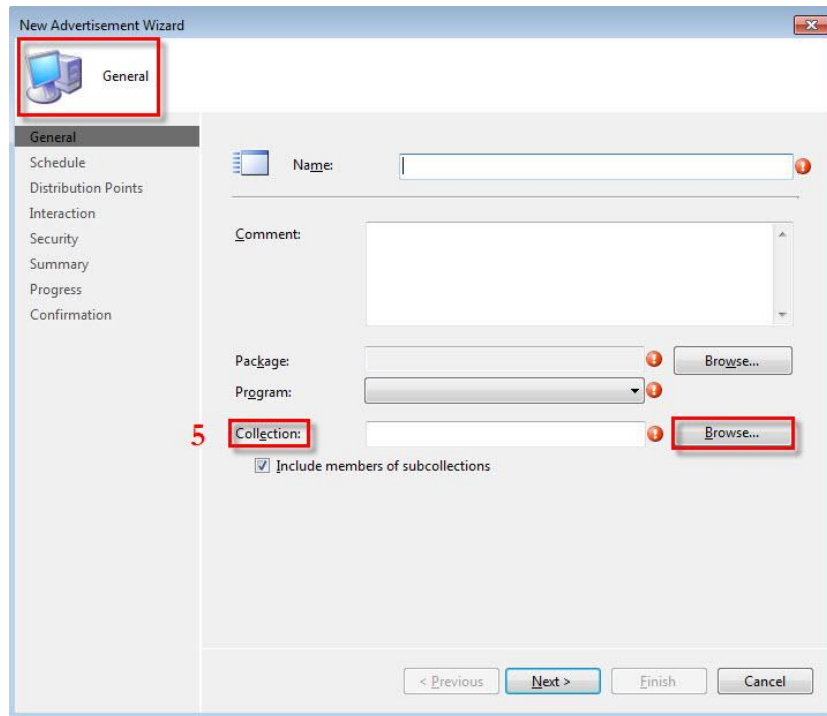
Click on **“Browse”** Displays the following, Select the target package.

Once selected the OK is activated.

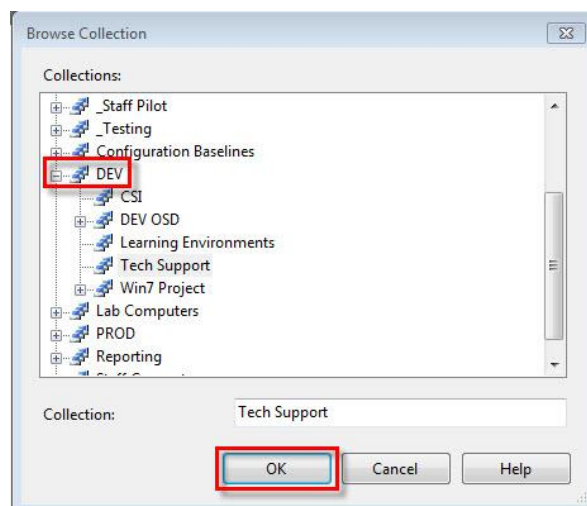
Click **“OK”**



- 4.1:** Program: Specifies the program contained in the selected package that is to be advertised
e.g. Adobe Contribute CS4 or SelfInstall
- 5.1:** Collection: Click on **“Browse”**



This displays the following screen that expands to the target area e.g. LET
Click **“OK”**



Once “OK” has been ticked the General tab is completed e.g. the figure below is displayed.

Click **“Next”**

The screenshot shows the 'New Advertisement Wizard' window in MS SCCM. The 'General' tab is selected and highlighted with a red box. The wizard has a left-hand navigation pane with the following options: General, Schedule, Distribution Points, Interaction, Security, Summary, Progress, and Confirmation. The main area of the wizard contains the following fields and controls:

- Name:** A text box containing 'DEV_Adobe Contribute CS4'.
- Comment:** A text area containing 'This is an example for display purposes only.'.
- Package:** A text box containing 'Adobe Contribute CS4' with a 'Browse...' button to its right.
- Program:** A dropdown menu showing 'Self Install'.
- Collection:** A text box containing 'DEV' with a 'Browse...' button to its right.
- Include members of subcollections:** A checked checkbox.

At the bottom of the wizard, there are four buttons: '< Previous', 'Next >' (highlighted with a red box), 'Finish', and 'Cancel'.

The Schedule dialogue box is displayed.

Advertisement Start Time: Sets the time and date that the program will be advertised.

Advertisement Expires: Sets the time and date that the advertisement will expire.

Mandatory Assignments: A maximum of 15 mandatory assignments can be assigned.

Enable wake on LAN: Specifies if the mandatory assignments will wake the target computer to run the advertised package.

Ignore maintenance windows when running program:

Specifies if the advertised package should ignore the maintenance window.

Allow system restart outside Maintenance window:

Specifies whether a restart is allowed outside the maintenance window.

Priority: Sets the advertisements priority (Options: High, Medium, (Default) & Low.

Click **“Next”**

The screenshot shows the 'New Advertisement Wizard' dialog box with the 'Schedule' tab selected. The 'Schedule' tab is highlighted in the left sidebar. The main area contains the following settings:

- Advertisement start time:** 10/5/2010, 12:53 PM, UTC
- Advertisement expires:** 4/5/2011, 12:53 PM, UTC
- Mandatory assignments:** There are no items to show in this view.
- Enable Wake On LAN:** ☐
- Ignore maintenance windows when running program:** ☐
- Allow system restart outside maintenance windows:** ☐
- Priority:** Medium
- Program rerun behavior:** Always rerun program

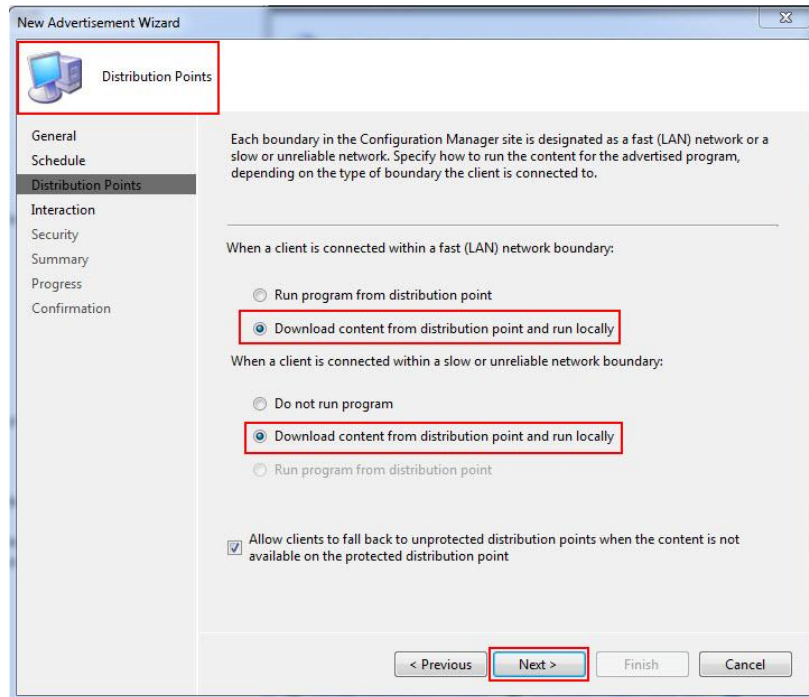
The 'Next >' button is highlighted with a red box.

The Distribution Points dialogue box is displayed. At this point in time!!!

“Check” Download content from distribution point and run locally.

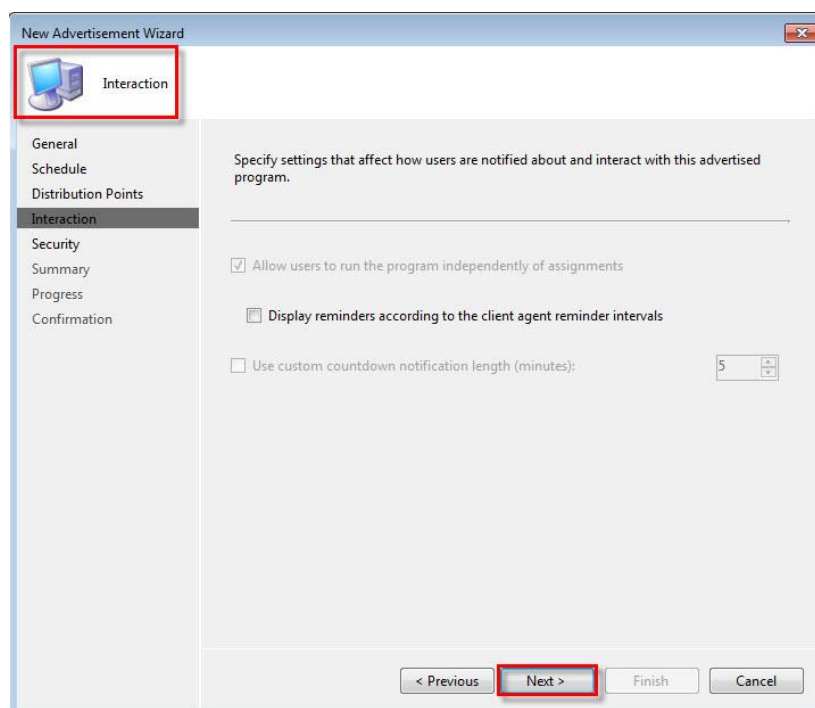
“Check” Download content from distribution point and run locally.

Click **“Next”**



The Interaction dialogue box is displayed. No alteration to the defaults is required.

Click **“Next”**

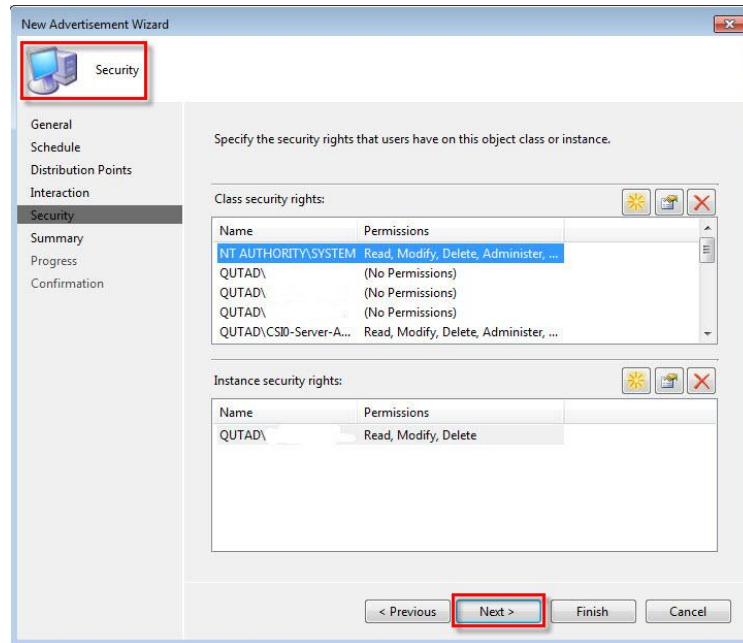


Security IMPORTANT

Once you have completed this wizard you will need to go back into the advertisement record and modify the security permissions.

The Security dialogue box is displayed.

Click **“Next”**

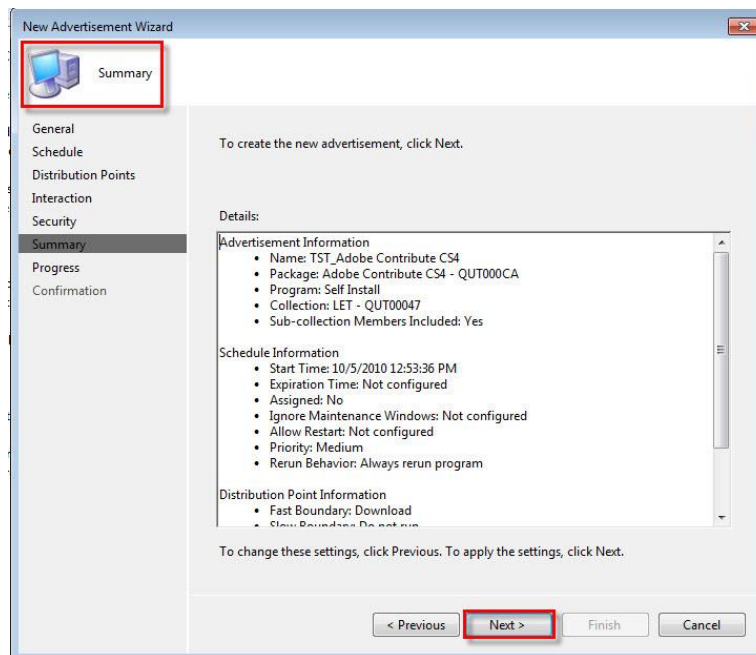


The **Summary** dialogue box is displayed. This is the last chance to correct any anomalies.

If all correct...

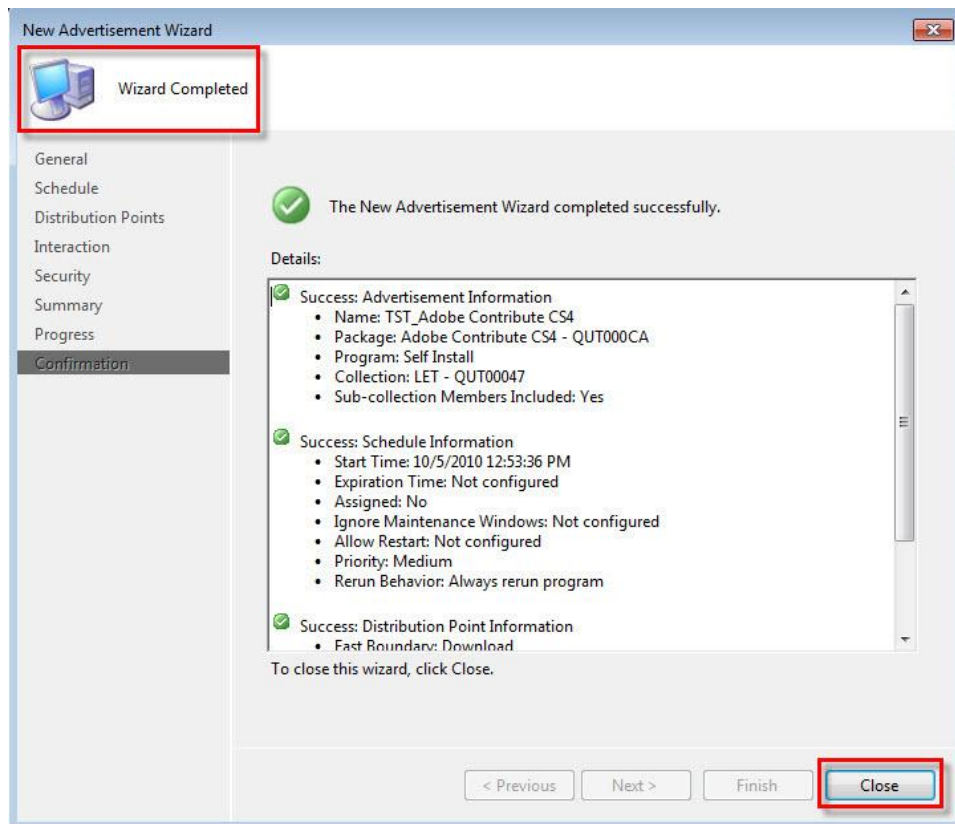
**IMPORTANT: DOUBLE CHECK THAT ALL SETTINGS ARE CORRECT,
CONFER WITH A COLLEAGUE.**

Click **“Next”**



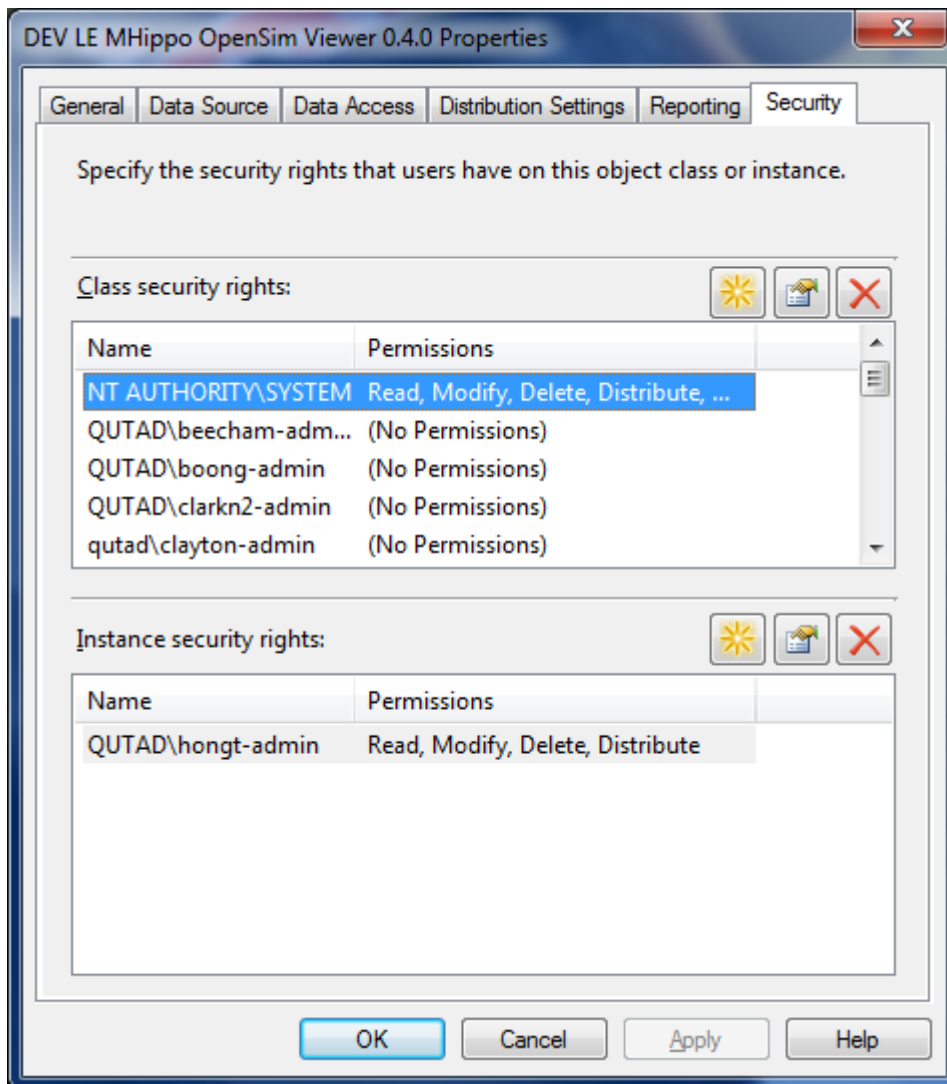
The Confirmation dialogue box is displayed

Click **“Close”**



Next

Find the package you just created; highlight the advertisement record right click and select properties
Select Security tab

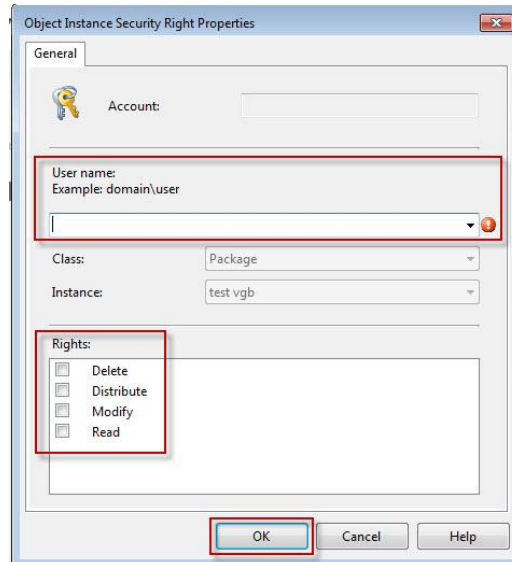




Click as in the figure above. This displays the figure below.

Grant QUTAD\sccm-labmgmt and QUTAD\sccm-staffmgmt the same security privileges as yourself

Click **“OK”** and OK again



.....

Please be aware this is not designed to be the definitive resource on this topic.

It is a brief “How to ..” to assist Technical Support Staff.

If you have a constructive comment that will improve this document please email the

[Windows 7 Upgrade Project Team](#)
