

Software Distribution Part 1

Creating a New Distribution Package

Prepared by: Vern Beecham
Created: 13 October 2010

i. Structure

1. **Archive** – Superseded or redundant applications are moved from production/development to archive. This makes them available in case of a roll-back.
2. **Development** – New packages are placed here during the testing, QA and UAT processes. There are sub-categories for CSI, LE, TechSup, etc.
3. **Production** – Packages are sorted under folders for each vendor that has more than one product.

ii. Processes

1. **Packages moving to production:** Once packages have passed QA and UAT, an ITSM task is forwarded to CSI, and CSI will move files from SOE\DSL\DEV to SOE\DSL\PROD and move the package to the Production category

iii. Standards

1. **Naming convention for Packages** is: 'Vendor ApplicationName Version#'.
I.e. FrontRange ITSM 6.1.4.0.
 - a. *NOTE: Name field has a 100 character limit*
2. **Name convention for Program**
 - a. **Task Sequence:** "Install Packagename"
 - b. **Self-Install:** "SelfInstall"

iv. Action Items :

1. Where multiple versions of packages are required a suitable naming convention needs to be established ideas raised included an appended section after the name that would assist in translating meaning to support staff.
(CSI)

Overview:

Packages are the core of the software distribution system within Microsoft System Configuration Centre Manager (MS SCCM). They are containers that MS SCCM uses to distribute software to client computers. The package can contain the source files that need to be copied to a client's PC, or a command to run files that are already present on the client PC. The package may contain all the files of the MS Office 2010 DVD or a simple icon to be placed on

a user's desktop. In the QUT environment technical staff will be distributing packages created using the Thin App or App-V virtualising software.

Starting from scratch: Start at the Package node of MS SCCM console. It can be seen that there are three categories;

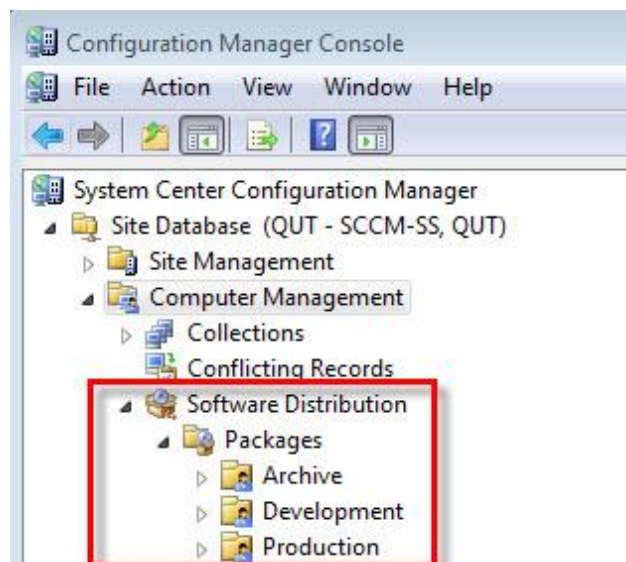
- Archive:** Superseded or redundant applications. These applications have been moved from Production and stored for “roll back” purposes
- Development:** This area is used to develop new packages including QA and UAT testing. Sub categories are provided for CSI & Lets
- Production:** Packages that have successfully completed QA and UAT testing and are ready for deployment are stored, according to the [Software Filing Convention](#), in this location.

Processes

2. **Packages moving to production:** Once packages have passed QA and UAT, an ITSM task is forwarded to CSI, and CSI will move files from SOE\DSL\DEV to SOE\DSL\PROD and move the package to the Production category

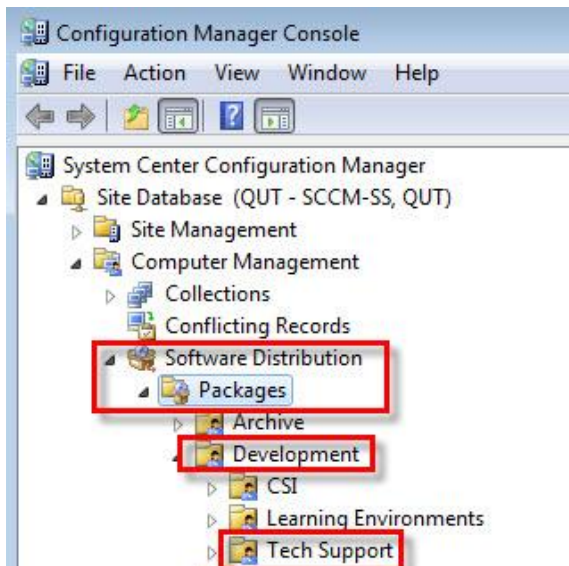
v. Standards

1. **Naming convention for Packages** is: 'Vendor ApplicationName Version#'.
I.e. FrontRange ITSM 6.1.4.0.
 - a. *NOTE: Name field has a 100 character limit*
2. **Name convention for Program**
 - a. **Task Sequence:** “Install Packagename”
 - b. **Self-Install:** “SelfInstall”



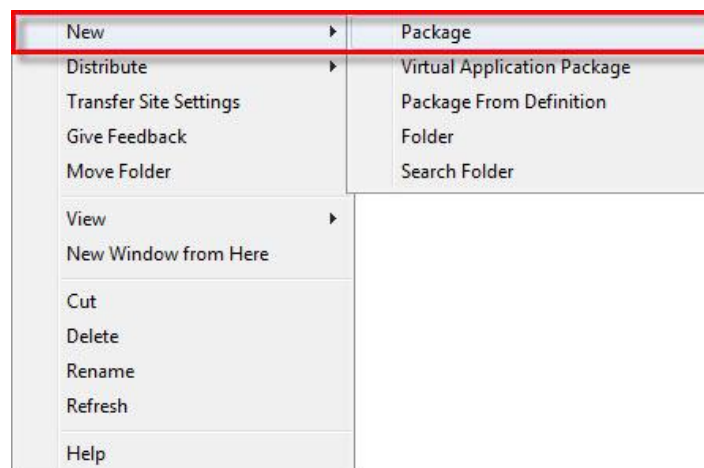
Creating a new Package:

Expand “Software Distribution” ... “Packages” ... “Development” the following is displayed.



Right Click on your area e.g. “Tech Support”

Click on “**New**” expands to reveal Package click on “**Package**” to start the “New Package Wizard”



1 Name: Enter the name of the package

Naming convention for Packages is (under development):

“DEV Vendor ApplicationName Version#”.

Example: DEV FrontRange ITSM 6.1.4.0.

NOTE: Name field has a 100 character limit

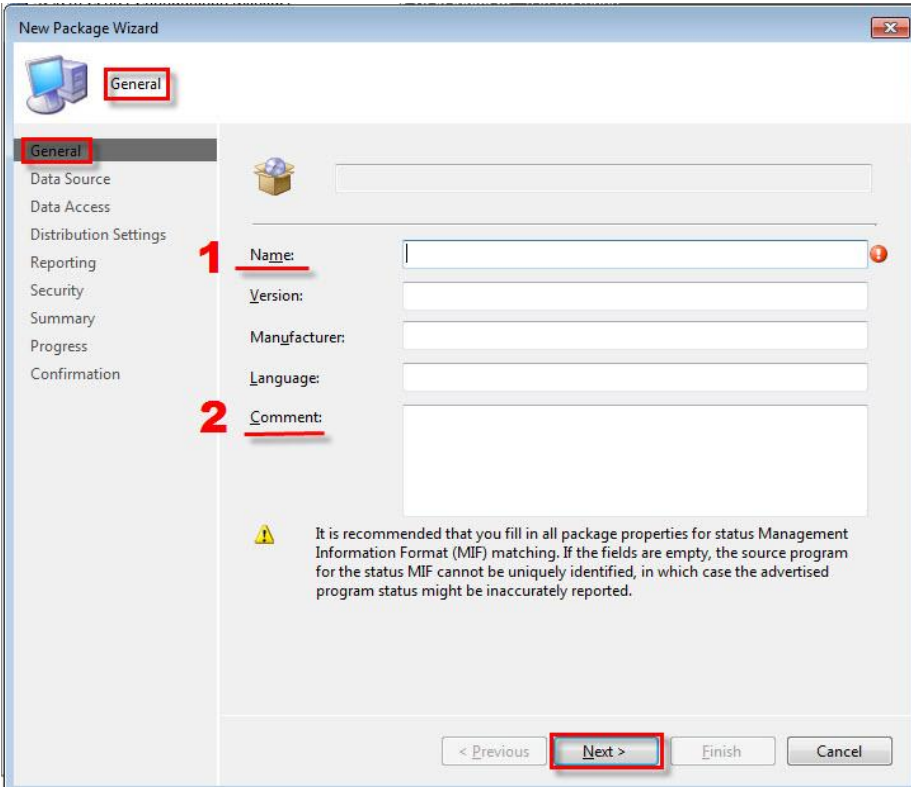
Version: In the QUT environment Please leave this blank.

Manufacturer: In the QUT environment Please leave this blank.

Language: In the QUT environment Please leave this blank.

2 Comment: Write a self explanatory comment if required.

Once the fields have been entered Click “**Next**”



The image shows the 'New Package Wizard' dialog box, specifically the 'General' tab. The 'General' tab is selected in the left-hand navigation pane. The main area contains several input fields: 'Name', 'Version', 'Manufacturer', 'Language', and 'Comment'. The 'Name' field is highlighted with a red box and a red number '1'. The 'Comment' field is highlighted with a red box and a red number '2'. Below these fields is a warning icon and a message: 'It is recommended that you fill in all package properties for status Management Information Format (MIF) matching. If the fields are empty, the source program for the status MIF cannot be uniquely identified, in which case the advertised program status might be inaccurately reported.' At the bottom right, there are four buttons: '< Previous', 'Next >', 'Finish', and 'Cancel'. The 'Next >' button is highlighted with a red box.


New Package Wizard

General

General
Data Source
Data Access
Distribution Settings
Reporting
Security
Summary
Progress
Confirmation

1 Name:

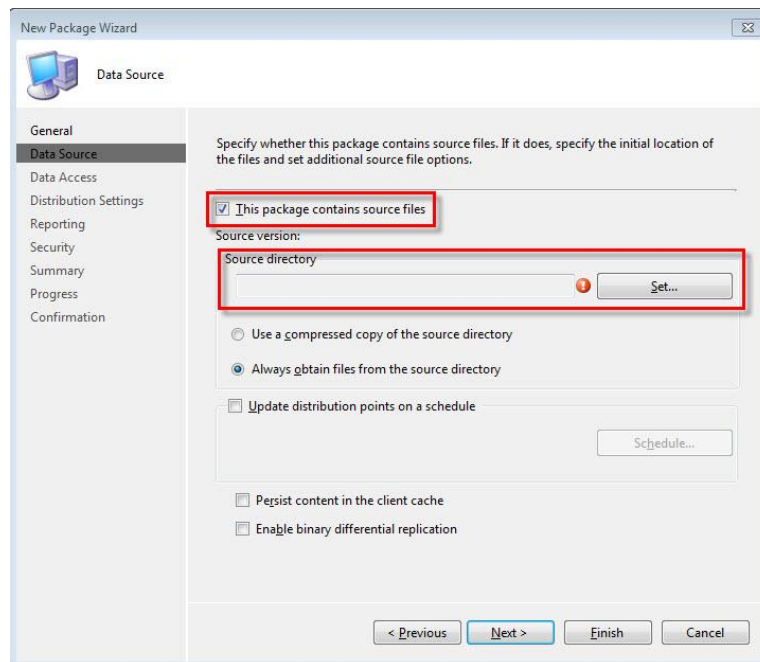
2 Comment:

 It is recommended that you fill in all package properties for status Management Information Format (MIF) matching. If the fields are empty, the source program for the status MIF cannot be uniquely identified, in which case the advertised program status might be inaccurately reported.

< Previous **Next >** Finish Cancel

“Tick” The Checkbox “This package contains source files”

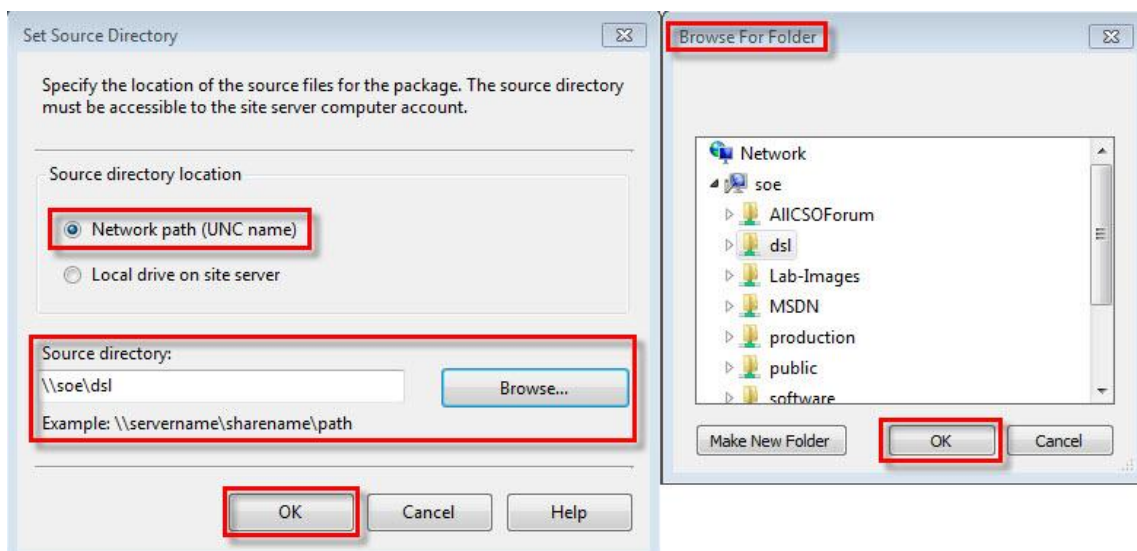
Once checked the “Source directory” becomes active.



Click on “Set” activates the following

Browse to the “Source Directory” that contains the application source files as created previously
i.e. <\\soe\dsl\dev\adobe\acrobatpro\9.3.0>

Click “OK”



Ensure **“Always obtain files from the source directory”** checked

Leave the check boxes **“Persist content in the client cache”** & **“Update distribution points on a schedule”** unchecked as per the default setting.

Click **“Next”**

New Package Wizard

Data Source

General
Data Source
Data Access
Distribution Settings
Reporting
Security
Summary
Progress
Confirmation

Specify whether this package contains source files. If it does, specify the initial location of the files and set additional source file options.

☒ This package contains source files

Source version:

Source directory: \\soe\\dsl Set...

☐ Use a compressed copy of the source directory

☒ Always obtain files from the source directory

☐ Update distribution points on a schedule Schedule...

☐ Persist content in the client cache

☐ Enable binary differential replication

< Previous Next > Finish Cancel

Data Access use the default settings Click **“Next”**

New Package Wizard

Data Access

General
Data Source
Data Access
Distribution Settings
Reporting
Security
Summary
Progress
Confirmation

Specify where this package is stored on distribution points. These settings apply to all distribution points receiving the package.

☒ Access the distribution folder through common ConfigMgr package share

☐ Share the distribution folder

Share name:

Package update settings

☐ Disconnect users from distribution points

Number of retries before disconnecting users: 2

Interval between user notification and disconnection (minutes): 5

< Previous Next > Finish Cancel

Distribution Settings use the default settings Click “Next”

New Package Wizard

Distribution Settings

General
Data Source
Data Access
Distribution Settings
Reporting
Security
Summary
Progress
Confirmation

Specify the sending priority and the preferred sender to use when sending the package to child sites.

Sending priority: Medium

Preferred sender: <No Preference>

Branch distribution point content settings

☒ Automatically download content when packages are assigned to branch distribution points

☐ Make this package available on protected distribution points when requested by clients inside the protected boundaries

☐ Administrator manually copies this package to branch distribution points

Operating system deployment settings

⚠ These settings apply only during the WinPE phase of a run command line task sequence step.

☐ Allow this package to be transferred via multicast (WinPE only)

☐ Encrypt multicast packages

☐ Transfer this package only via multicast

< Previous **Next >** Finish Cancel

“Reporting” use the default settings Click “Next”

New Package Wizard

Reporting

General
Data Source
Data Access
Distribution Settings
Reporting
Security
Summary
Progress
Confirmation

Specify how Management Information Format (MIF) files generated by clients apply to this package.

☒ Use package properties for status MIF matching

☐ Use these fields for status MIF matching:

MIF file name:

Name:

Version:

Publisher:

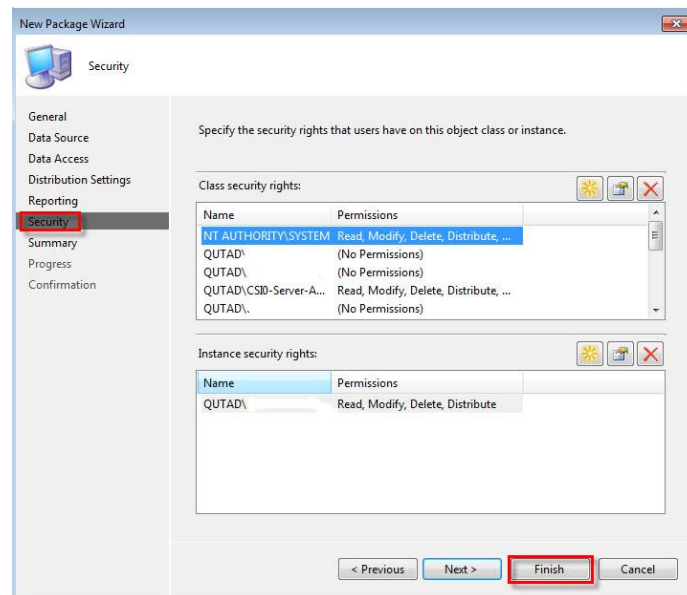
⚠ It is recommended that you fill in all package properties for status Management Information Format (MIF) matching. If the fields are empty, the source program for the status MIF cannot be uniquely identified, in which case the advertised program status might be inaccurately reported.

< Previous **Next >** Finish Cancel

Security IMPORTANT

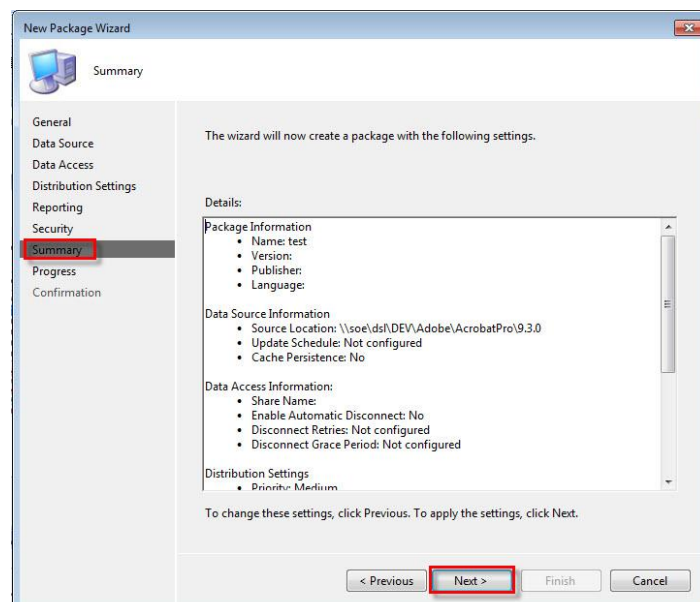
Once you have completed this wizard you will need to go back into the Package record and modify the security permissions.

Click on **“Finish”**

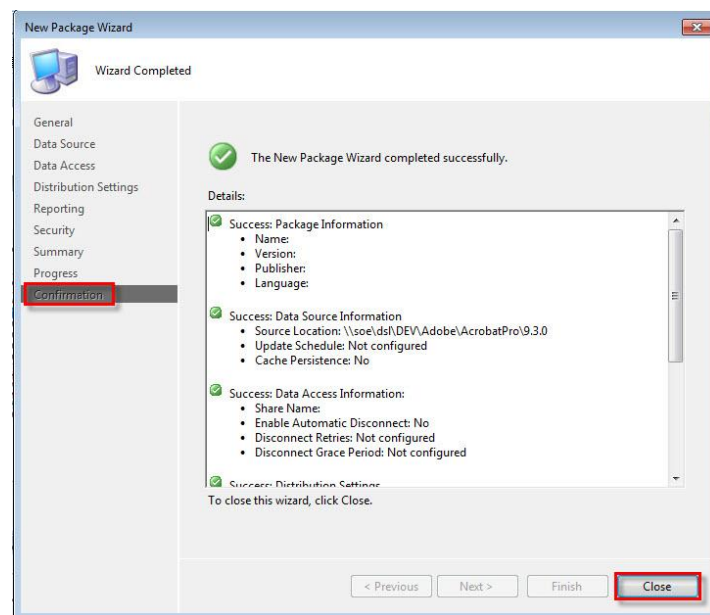


The New Package Wizard will display the following “Summary” screen

Check the information presented and Click **“Next”**



The Confirmation screen is displayed; recheck the settings Click **“Close”**

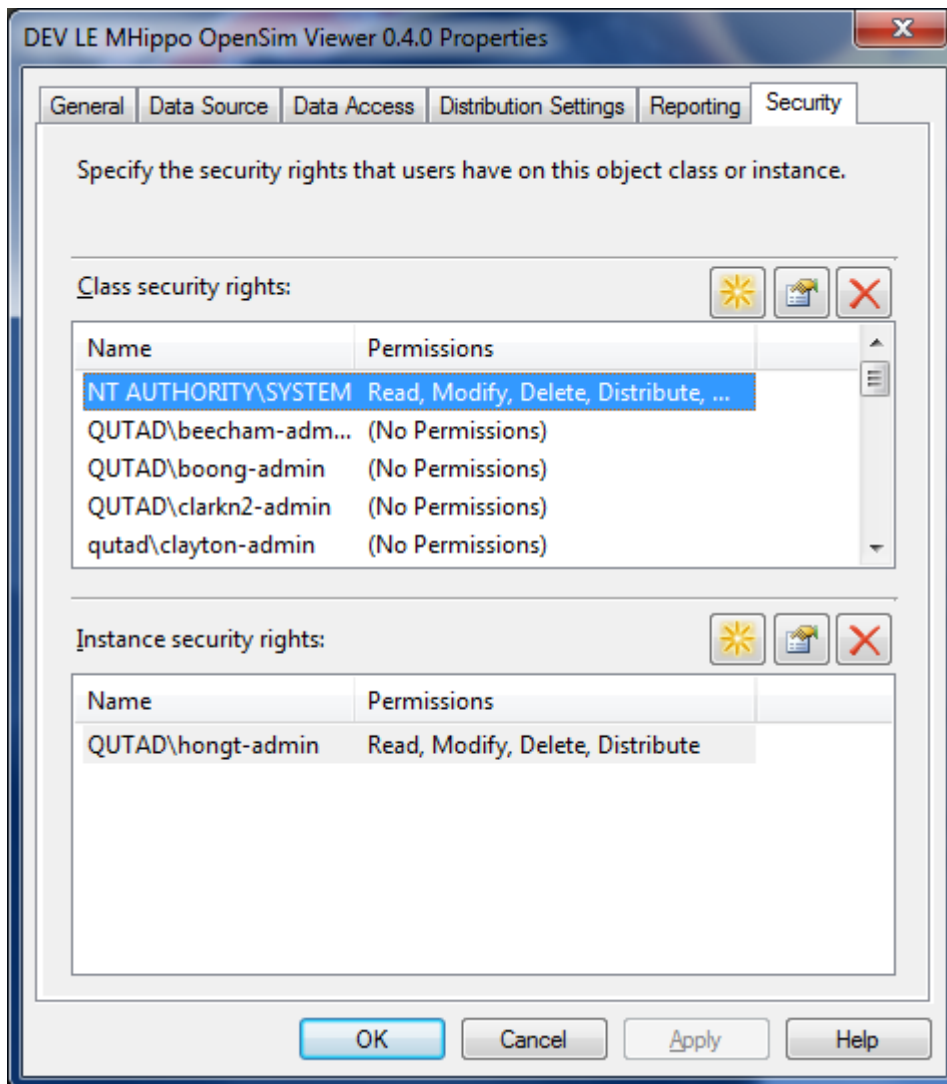


The package has now been added to MS SCCM.

Next

Find the package you just created; highlight the Package record right click and select properties

Select Security tab

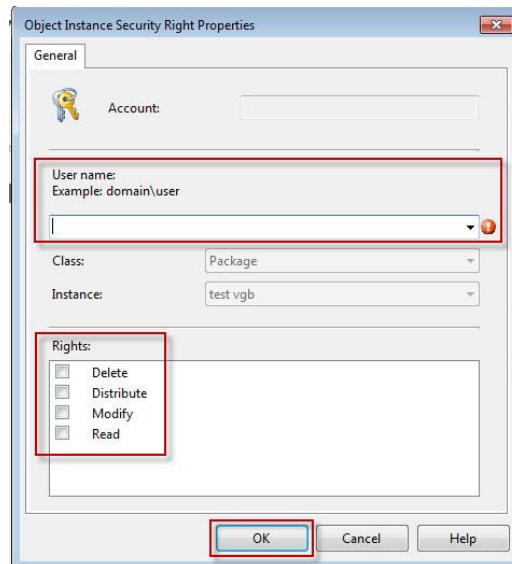




Click  as in the figure above. This displays the figure below.

Grant QUTAD\sccm-labmgmt and QUTAD\sccm-staffmgmt the same security privileges as yourself

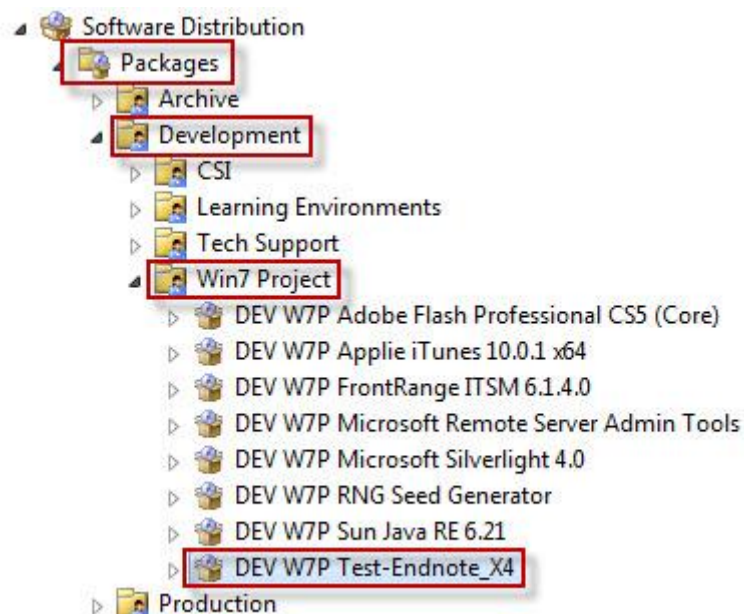
Click **“OK”** and OK again



Next add Distribution Points for the package

The figures below are for **DEMONSTRATION** purposes **ONLY**

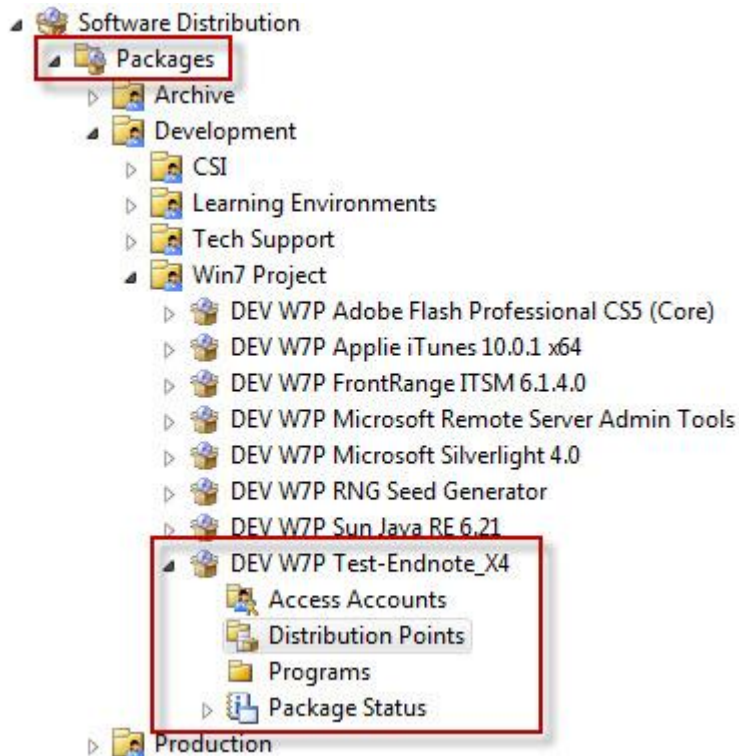
It can be seen that Endnote X4 has been packaged as per the directions above. In this instance the package has been added to the Win 7 Project Testing Environment.



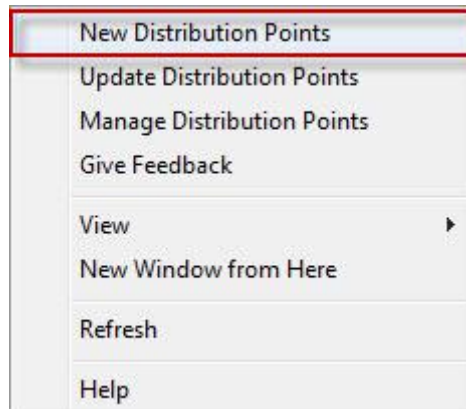
The Package is to be uploaded to the Distribution Points prior to being distributed via an Advertisement.

Expand the Package entry (DEV W7P Test-Endnote_X4) as shown below.

Right Click on “Distribution Points”

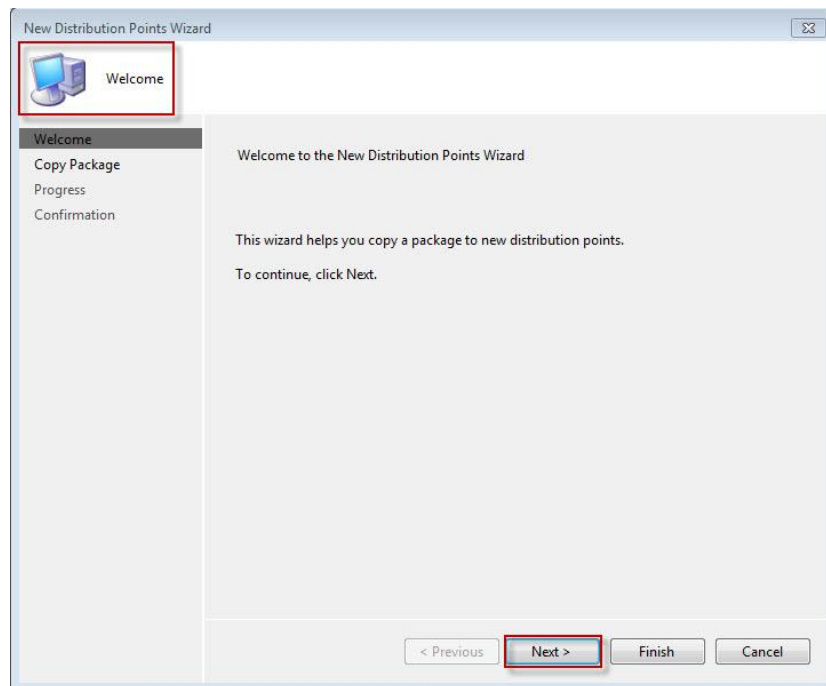


Click on “New Distribution Point”



Starts the “New Distribution Point Wizard”

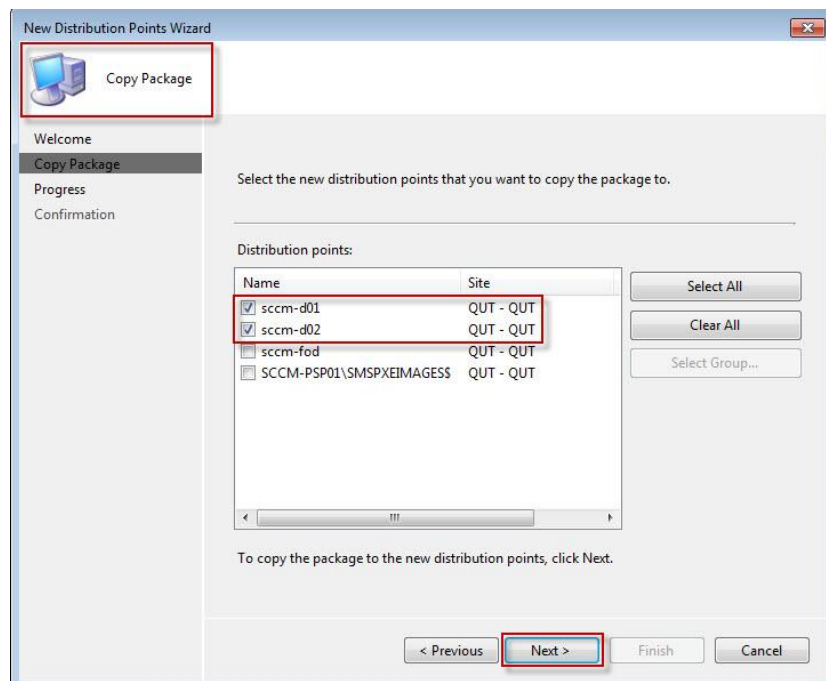
Click **“Next”**



Copy Package page of the “New Distribution Point Wizard”

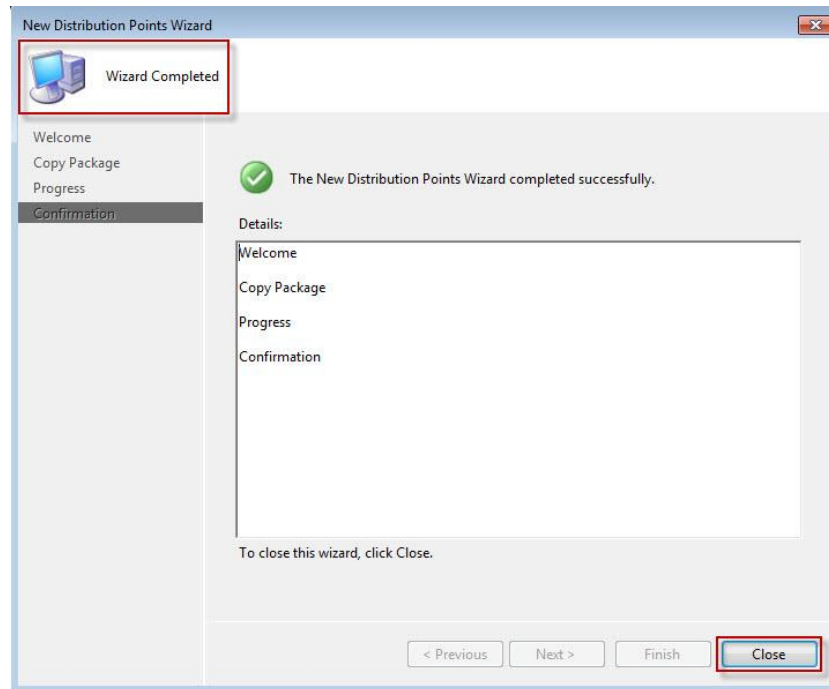
Check the box to ... sccm-do1 & sccm-do2 ONLY

Click **“Next”**



Wizard Completed page of the “New Distribution Point Wizard”

Click **“Close”**



Go to **“Add a Program”**

(<https://sharepoint.qut.edu.au/tsl/Technical%20Library/MS%20Windows%207/Creating%20a%20New%20Program.docx>)

.....

Please be aware this is not designed to be the definitive resource on this topic.

It is a brief “How to ..” to assist Technical Support Staff.

If you have a constructive comment that will improve this document please email the

[Windows 7 Upgrade Project Team](#)
