

## Creating a New Program

Prepared by: Vern Beecham  
Created: 19 October 2010

1. **Name convention for Program**
  - a. **Task Sequence:** “Install Packagename”
  - b. **Self-Install:** “SelfInstall”
  - c. **Uninstall:** “Uninstall”

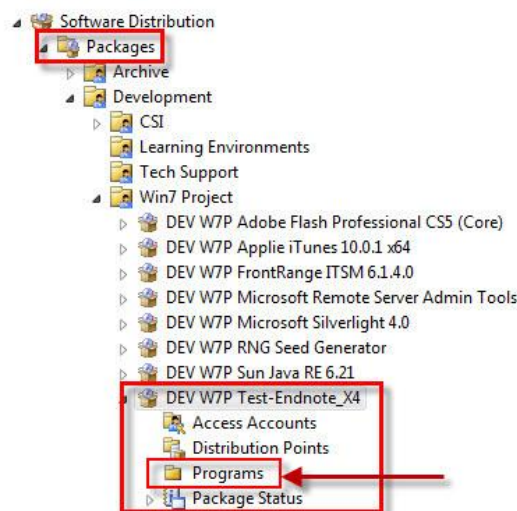
A Program in Microsoft System Configuration Centre Manager (MS SCCM) is what actually tells the client’s PC what to do with the package that contains the source files or other information that has been sent to the client’s PC when advertised by the advertisement.

To continue from the previous document [“Creating a New Package”](#) The package was created and is listed in the MS SCCM console under Packages ... Development ... Area.

Expand the selected package, this displays:

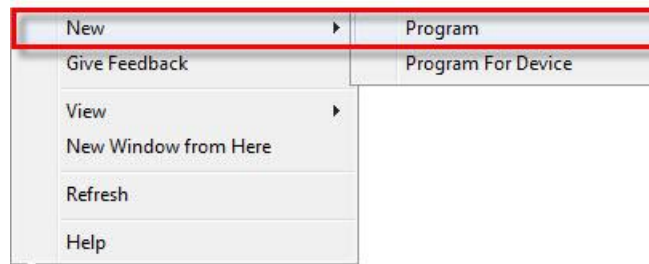
- Access Accounts
- Distribution Points
- Programs
- Package Status

**Right Click on “Programs”**



**Expand “New” to “Program”**

**Click on “Program”**



The New Program Wizard will be displayed.

### New Program Wizard General Page

**Name:** The **Naming Convention** for a program is

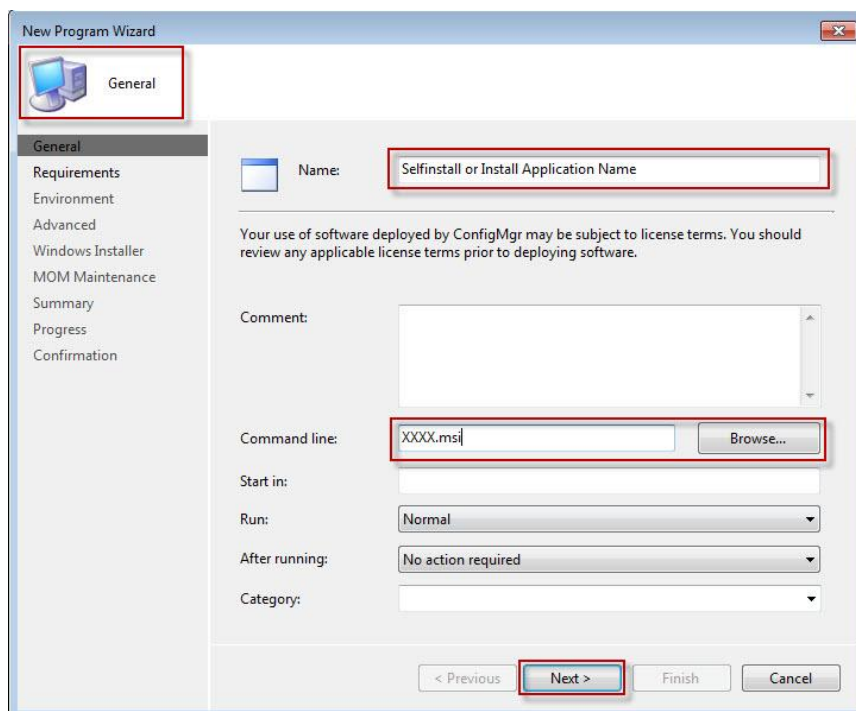
- for a self-install program is “Self Install”
- for task sequenced installed program (no user input required) “Install Package Name” ( do not include “dev or Area”)
- and an “Uninstall”

Comment: Optional descriptive text statement. (Max 127 characters)

### Command Line:

- This is a required field specifying the command line for the program
- Browse to the application package location and select the \*.msi, \*.exe, \*.bat etc as required with the requisite switches for quiet install and no restart etc.

e.g. msixec /i AdobeFlashProfessionalCS5.msi /qb



**Start In:**

- An optional field describing the executable folder.

**Run:**

- Sets the mode in which the program is run. The default is “Normal”

**After Running:**

- Describes what action is to be taken after the program is run.
  - **No Action Required:** Meaning MS SCCM does not need to do anything.
  - **ConfigMgr Restarts Computer:** Meaning MS SCCM will restart the PC automatically.
  - **Program Restarts Computer:** Meaning the program will restart the pc after it has installed.
  - **ConfigMgr Logs User Off:** Meaning the current user will be logged off from the PC.

**Category:**

- Sets the Add and Remove Programs category that will display the application as defined by the administrator.

Click on **“Next”**

## New Program Wizard Requirements Page

### \*\*\*\* Estimated Disk Space: \*\*\*\*

- Defines the amount of free disk space required for the program to run. It can be set to whole numbers >0. Ensure the correct unit value is set. The default is “Unknown”.

### Maximum Allowed Run Time:

- Describes the maximum amount of time for the application to install. Set to any whole number >0. The default is 120 mins. If the application is to be installed during a maintenance window, ensure the GP for the maintenance window allows sufficient for the installation plus the countdown time as well if required.

### This Program Can Run on Any Platform:

- Sets what options are available to MS SCCM. The default setting is that the application is OS and hardware independent, when set to default MS SCCM will not check the platform type before installing.

### \*\*\*\* This Program Can Only Run On Specific Platforms: \*\*\*\*

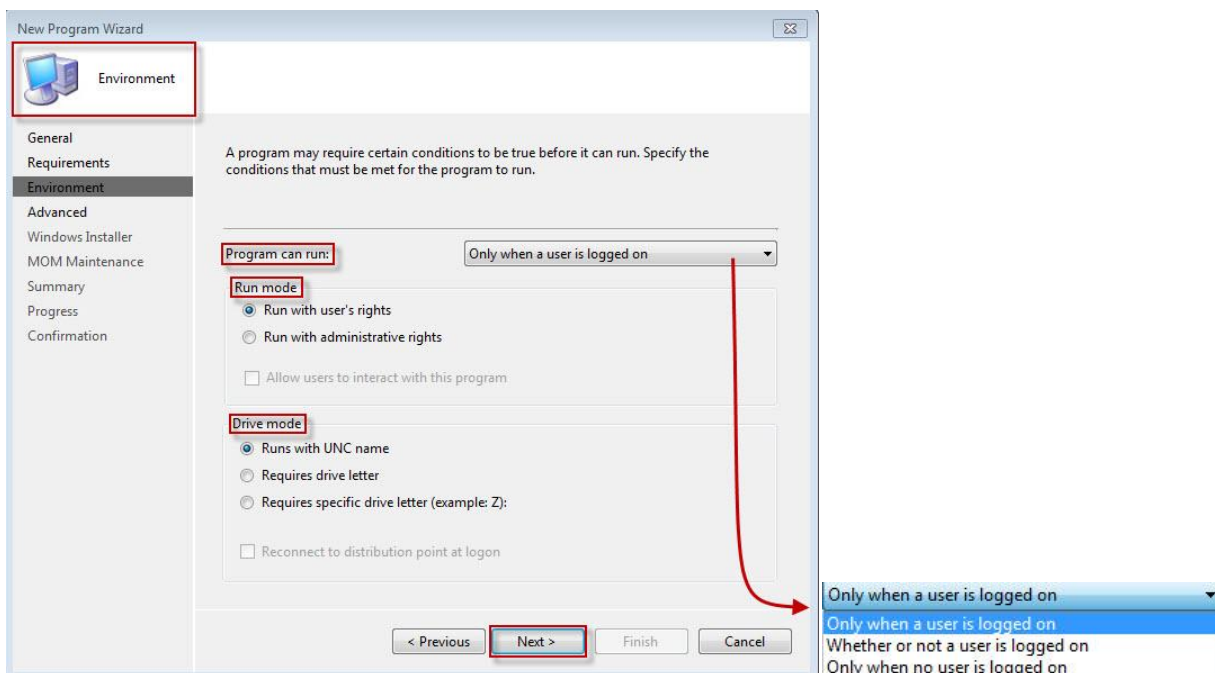
- Defines the OS and processor types required for the application. At least one OS & processor type option must be selected.

### Additional Requirements:

- Optional field of 127 characters. Usually used when the application is set up in “Add and Remove Programs”

## Click “Next”

## New Program Wizard Environment Page



**Program Can Run:** Choose one of three options.

- Only When A User Is Logged On.
- Only When No User Is Logged On.
- Whether Or Not A User Is Logged On.

**Run Mode:** Determines what credentials are required to run the program.

- Run With User's Rights: The default setting.
- Run With Administrative Rights: **(Used in the Majority of cases)** Forces the program to run under Local Administrator's credentials. When this setting is selected another option becomes available.
  - Allow User to Interact With This Program: This check box is available only when "Only When No User Is Logged On" is selected as a log on condition & "Run With Administrative Rights" is selected. Use this combination only if the application requires administrative rights and user interaction is required, otherwise leave blank.

**Drive Mode:** Provide three options for how the application drives when run from the distribution point. **IN THE QUT ENVIRONMENT CHOOSE THE DEFAULTS**

- Runs With UNC Name: Default Setting
- Requires A Drive Letter: Used if the application requires a drive letter.
- Requires Specific Drive Letter: Used if the application requires a specific drive letter.
- Reconnect To Distribution Point At Logon: Unchecked by default.

The **Environment** alternatives are..(3 Options; Self install, Install package name or UnInstall)

## 1: SELF INSTALL

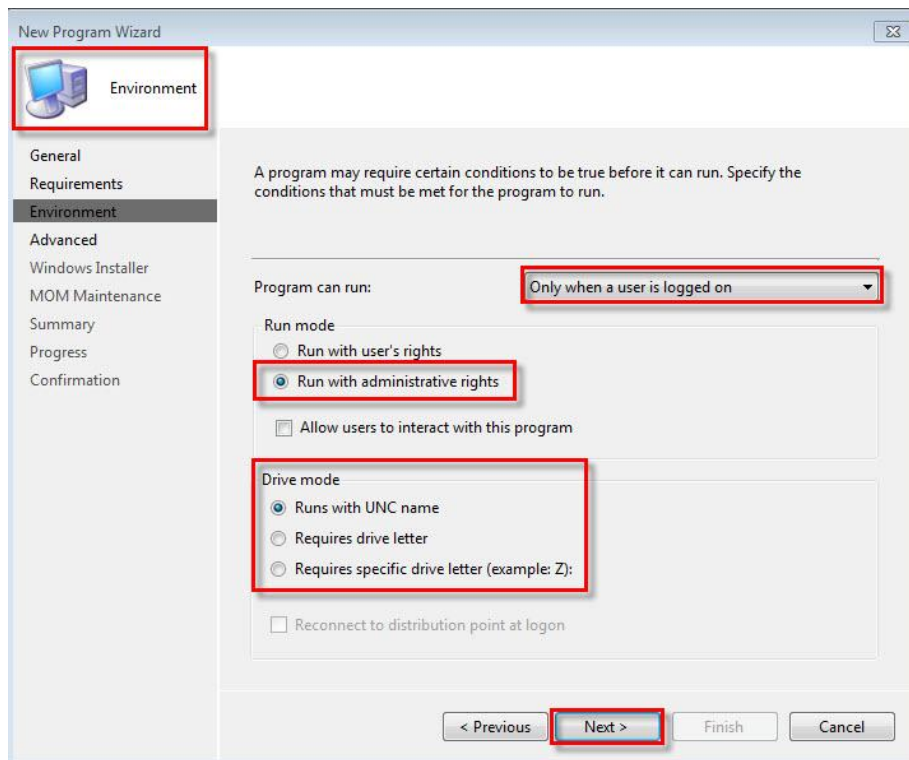
The “Default Setting”, “Only when a user is logged on” (Self Installs)

**Run Mode** has the options

- Run with user's rights
- Run with administrative rights ✓
- Allow users to interact with the program is removed

**Drive Mode** has the options

- Runs with a UNC name ✓
- Requires a drive letter
- Requires specific drive letter (example Z:)
- ~~Reconnect to distribution point~~ - Greyed Out



Click **NEXT**

**New Program Wizard Advanced Page**

**1 Requires defaults only**

**New Program Wizard**

Advanced

General  
Requirements  
Environment  
**Advanced**  
Windows Installer  
MOM Maintenance  
Summary  
Progress  
Confirmation

You can specify additional criteria for installing and running this program. You can also temporarily disable the program.

☒ **Run another program first:**

Package:

Program:

☐ Always run this program first

When this program is assigned to a computer:  
Run once for the computer

☐ Suppress program notifications

A disabled program is not displayed or run on clients.

☐ Disable this program on computers where it is advertised.

☐ Allow this program to be installed from the Install Software task sequence without being advertised.

< Previous **Next >** Finish Cancel

**Run another program first:** This is deselected by default. Choose a program that is required before the application currently being installed. Be aware that if the first program does not run neither will the selected application.

**Package:** This is the package that has the program that you wish to run first.

**Program:** This is the program contained in the Package above.

**Always Run This Program First:** Tick the check box if you require the specified program to be run prior the advertised package every time the advertised package runs regardless of whether it has run before.

**When This Program Is Assigned To A Computer:** Sets how the programs are assigned to users when the Program Can Run option in the previous page is set to Whether or Not A User Is Logged On. Otherwise, those options are greyed out. When available, those options are as follows:

- Run Once For the Computer
- Run Once For Every User That Logs On.

**Suppress Program Notifications:** Deselected by Default. The option disables all program notifications, messages, etc overriding the site settings.

**Disable This Program When It Is Advertised:** Deselected by Default. The option temporarily disables access from any advertisement.

**Allow This Program To Be Installed From The Install Program Task Sequence Without Being Advised:** The option allows this program to be used to install software tasks in operating system deployment without having to be advertised to a collection.

**FOR SELF INSTALLS CHOOSE THE DEFAULTS**

Click “Next”

OR



## 2: UNINSTALL

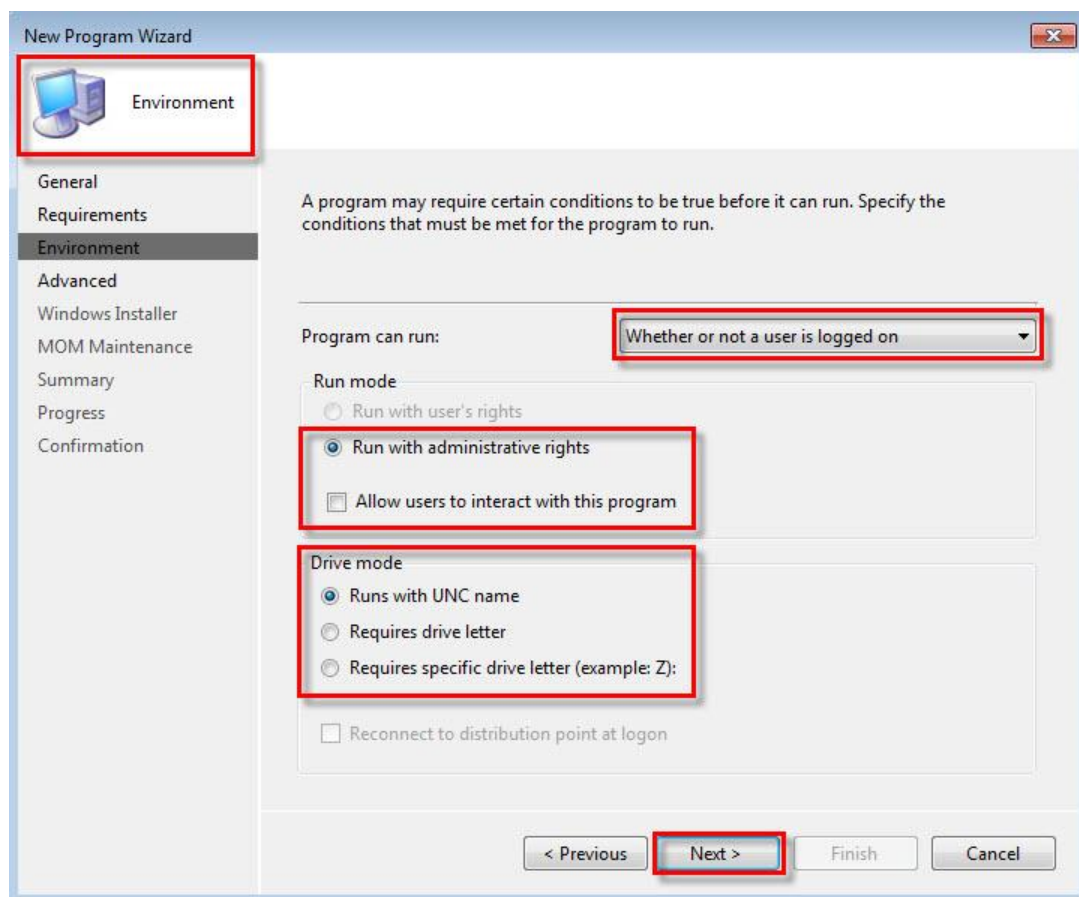
### Whether or not a user is logged on... Uninstall a Program

**Run Mode** has the options

- Run with user's rights, is disallowed (Greyed out)
- Run with administrative rights ✓
- Allow users to interact with the program

**Drive Mode** has the options

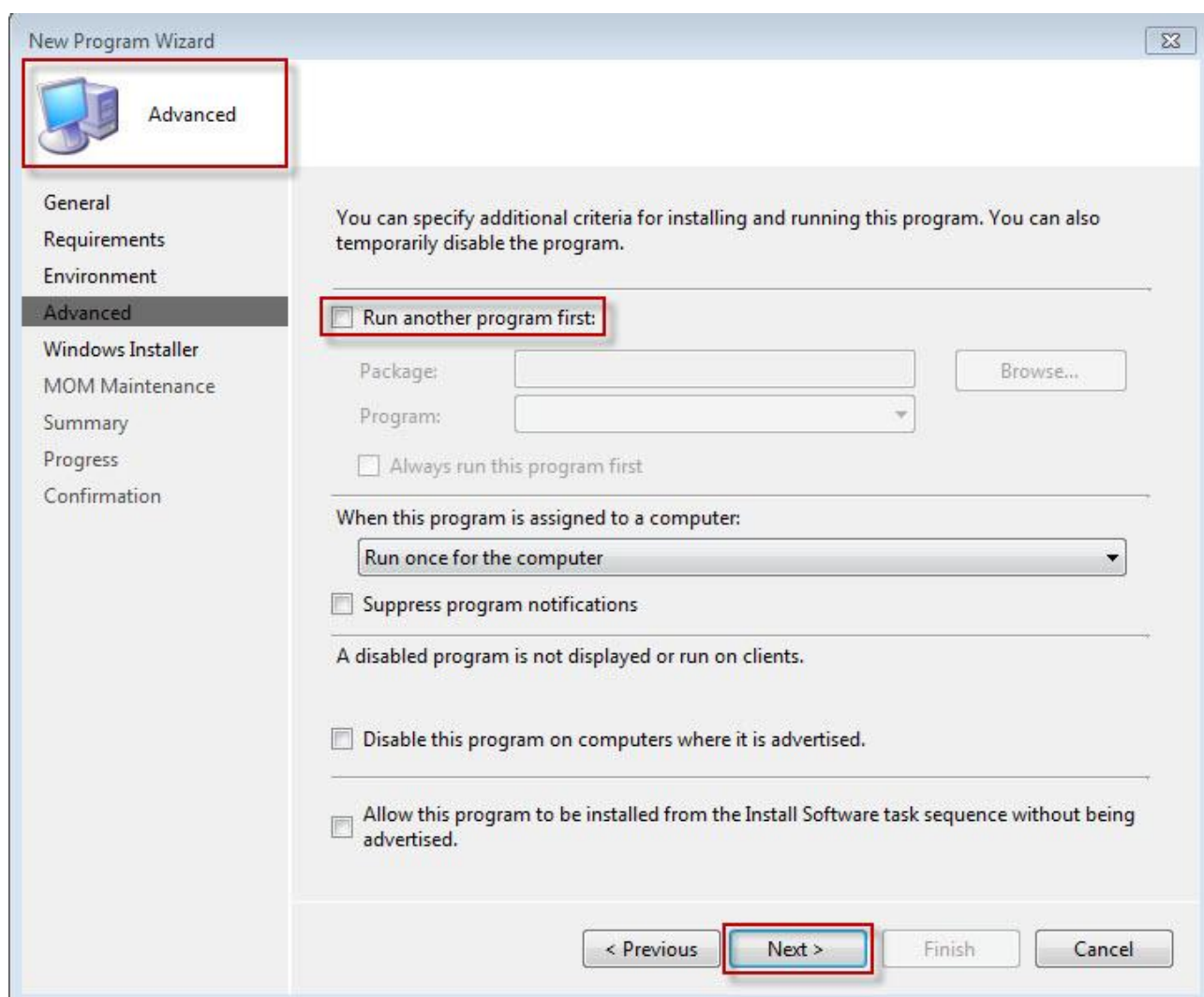
- Runs with a UNC name ✓
- Requires a drive letter
- Requires specific drive letter (example Z:)



Click **NEXT**

### New Program Wizard Advanced Page

**1 Requires defaults only**



**Run another program first:** This is deselected by default. Choose a program that is required before the application currently being installed. Be aware that if the first program does not run neither will the selected application.

**Package:** This is the package that has the program that you wish to run first.

**Program:** This is the program contained in the Package above.

**Always Run This Program First:** Tick the check box if you require the specified program to be run prior the advertised package every time the advertised package runs regardless of whether it has run before.

**When This Program Is Assigned To A Computer:** Sets how the programs are assigned to users when the Program Can Run option in the previous page is set to Whether or Not A User Is Logged On. Otherwise, those options are greyed out. When available, those options are as follows:

- Run Once For the Computer
- Run Once For Every User That Logs On.

**Suppress Program Notifications:** Deselected by Default. The option disables all program notifications, messages, etc overriding the site settings.

**Disable This Program When It Is Advertised:** Deselected by Default. The option temporarily disables access from any advertisement.

**Allow This Program To Be Installed From The Install Program Task Sequence Without Being Advised:** The option allows this program to be used to install software tasks in operating system deployment without having to be advertised to a collection.

**FOR UNINSTALLS CHOOSE THE DEFAULTS**

Click **“Next”**

OR

### 3: INSTALL PACKAGE NAME

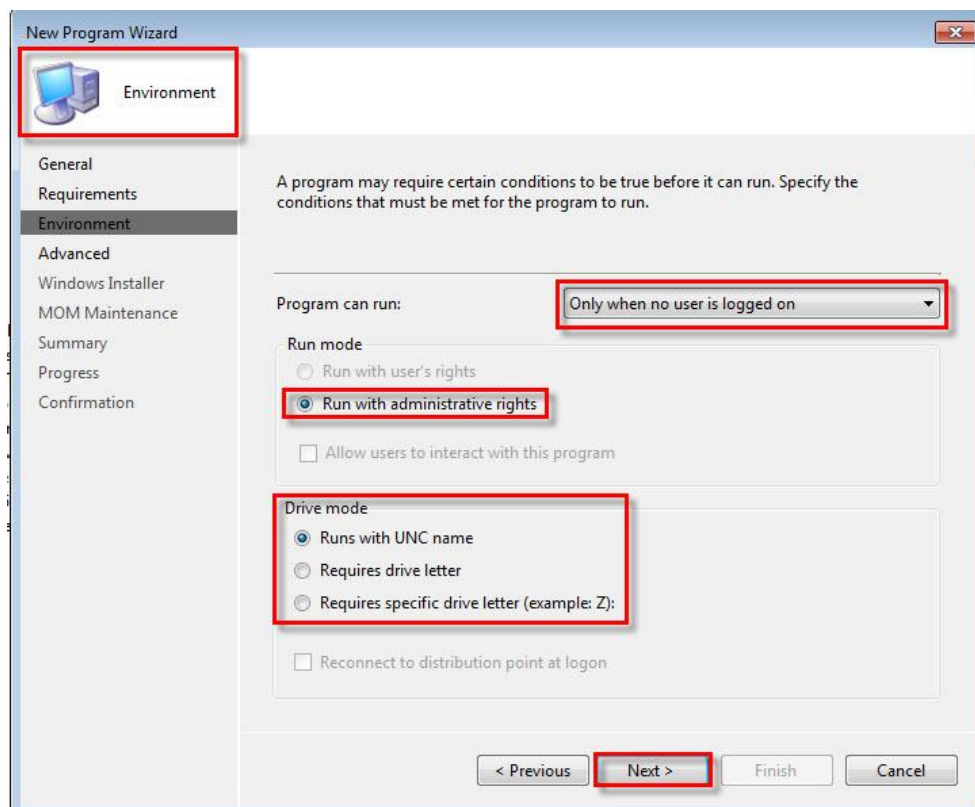
**Only when no user is logged on..... (Used for task sequence installs PC builds)**

**Run Mode** has the options

- ~~Run with user's rights~~, is disallowed (Greyed out)
- Run with administrative rights ✓
- ~~Allow users to interact with the program~~, is disallowed (Greyed out)

**Drive Mode** has the options

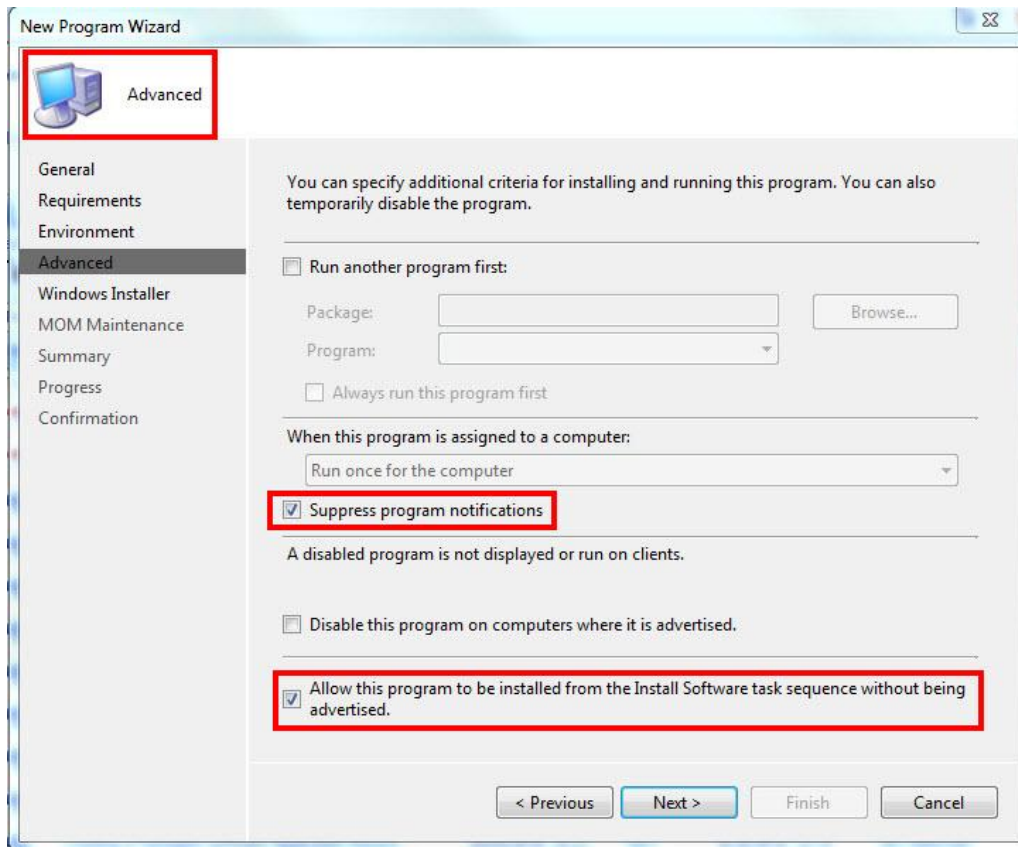
- Runs with a UNC name ✓
- Requires a drive letter
- Requires specific drive letter (example Z:)
- ~~Reconnect to distribution point~~ - Greyed Out



Click **NEXT**

## New Program Wizard Advanced Page

1. Select Suppress program notification
2. Select allow this program to be installed from the install software task sequence without being advertised



**Run another program first:** This is deselected by default. Choose a program that is required before the application currently being installed. Be aware that if the first program does not run neither will the selected application.

**Package:** This is the package that has the program that you wish to run first.

**Program:** This is the program contained in the Package above.

**Always Run This Program First:** Tick the check box if you require the specified program to be run prior the advertised package every time the advertised package runs regardless of whether it has run before.

**When This Program Is Assigned To A Computer:** Sets how the programs are assigned to users when the Program Can Run option in the previous page is set to Whether or Not A User Is Logged On. Otherwise, those options are greyed out. When available, those options are as follows:

- Run Once For the Computer
- Run Once For Every User That Logs On.

**Suppress Program Notifications:** Deselected by Default. The option disables all program notifications, messages, etc overriding the site settings.

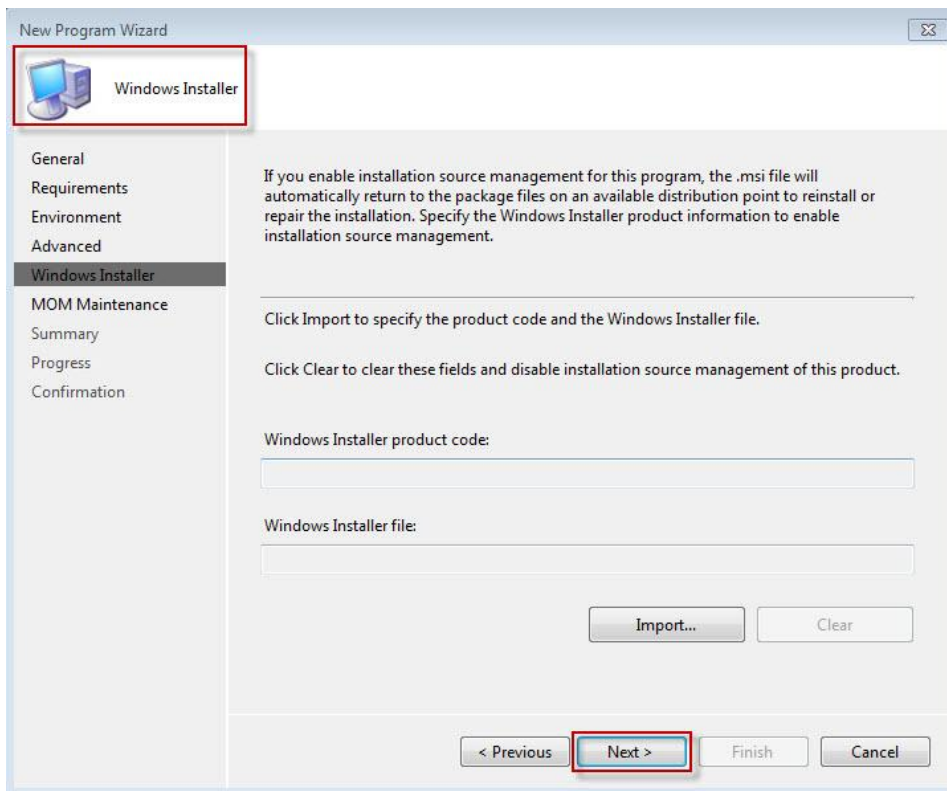
**Disable This Program When It Is Advertised:** Deselected by Default. The option temporarily disables access from any advertisement.

**Allow This Program To Be Installed From The Install Program Task Sequence Without Being Advised:** The option allows this program to be used to install software tasks in operating system deployment without having to be advertised to a collection.

## **FOR TASK SEQUENCE INSTALLS SELECT THE DEFAULTS**

Click “Next”

### **New Program Wizard Windows Installer Page**

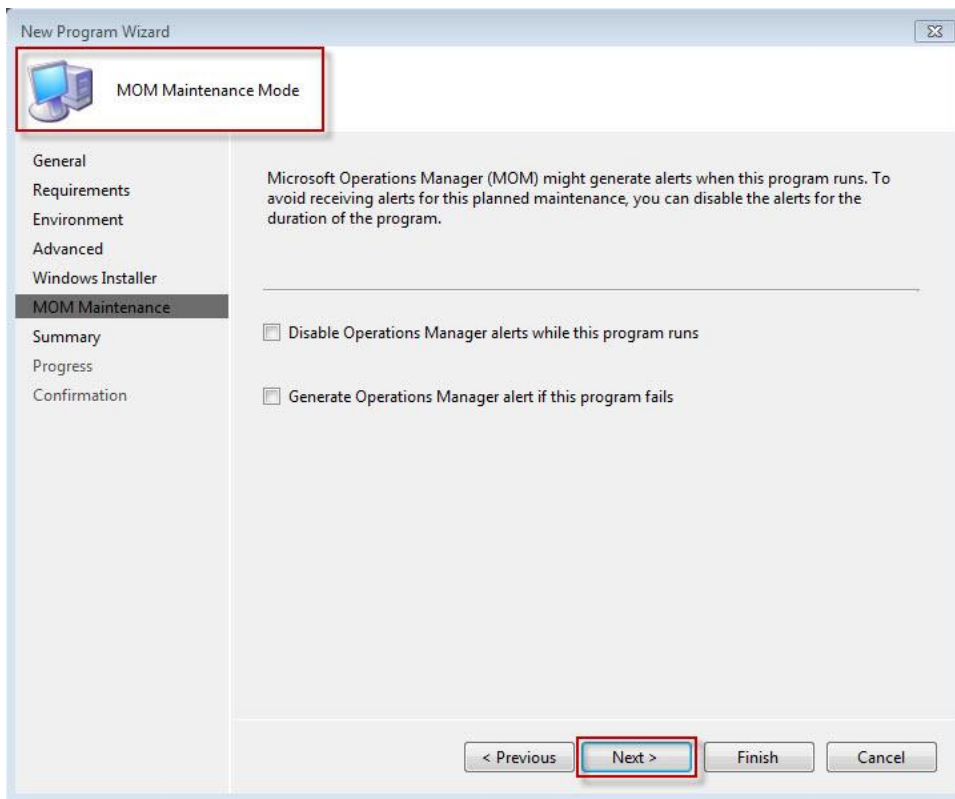


The Windows Installer page allows the user to import Windows Installer information and have the database updated automatically by MS SCCM. MS SCCM will automatically update the Windows Installer database on MS SCCN clients with a list of distribution points that have a copy of the source files for use on the client.

## **IN THE QUT ENVIRONMENT CHOOSE THE DEFAULTS**

Click “Next”

## New Program Wizard MOM Maintenance Mode Page



This page allows the user to set options for computers that are managed by Microsoft Operations Manager.

**Disable MOM Alerts While This Program Runs:** Choosing this option places the PC in maintenance mode while the program runs, it will not generate and MOM alerts.

**Generate MOM Alert If This Program Fails:** Sets the option to generate a MOM alert should the program fail to run, detailing the program name, advertisement ID etc.

The default is unchecked. Leave it in this condition as MOM is not run in the QUT desktop environment.

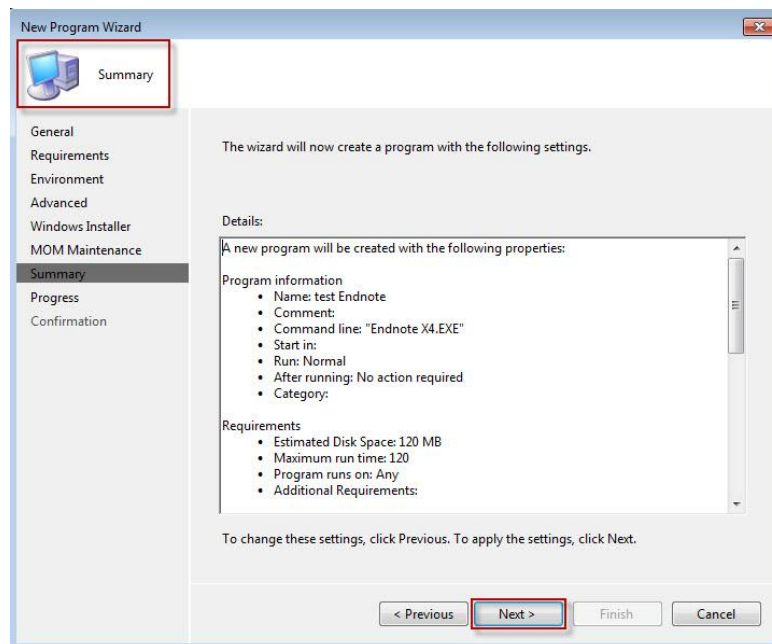
**IN THE QUT ENVIRONMENT CHOOSE THE DEFAULTS**

Click “Next”



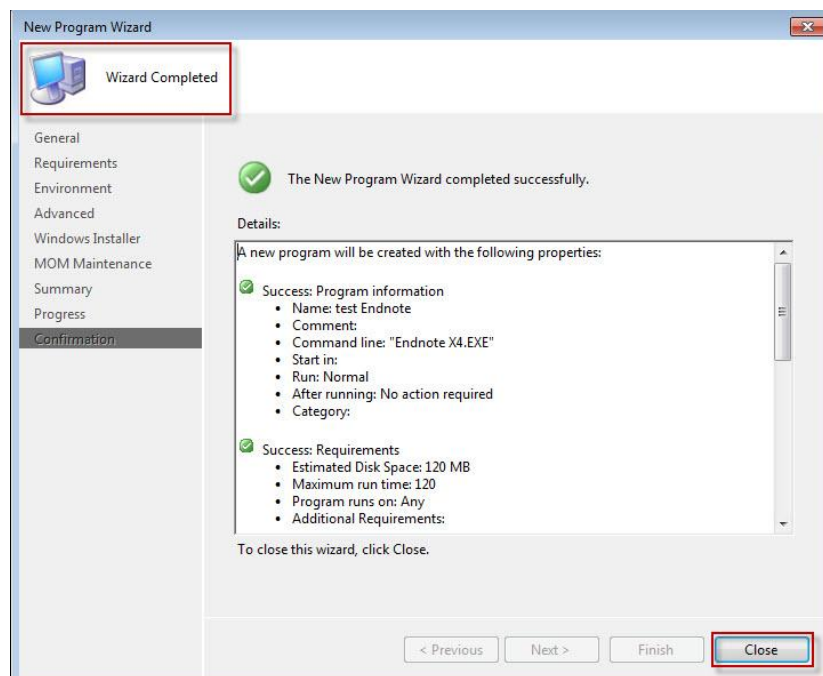
## New Program Wizard Summary Page

Click “Next”



## New Program Wizard Completed Page

Click “Close”





.....

Please be aware this is not designed to be the definitive resource on this topic.

It is a brief “How to ..” to assist Technical Support Staff.

If you have a constructive comment that will improve this document please email the

[Windows 7 Upgrade Project Team](#)

\*\*\*\*\*