

Creating a Query Based Collection

Prepared by: Windows 7 Upgrade Team

Created: 3 November 2010

Collection:

i. Outline of *Structure*

1. **Staff** - Machine objects only. Populated by queries based on machine names (Faculty/divisions). Contains sub collections for each area within the faculty/divisions
2. **Lab** - Machine objects only. Populated by queries based on machine names.
3. **Development** – Area used for testing packages and advertisements.
4. **Pilot** - Collection used primarily by CSI for larger-scale pilot testing of deployments
5. **Production** – packages that have passed QA and UAT

ii. *Processes*

1. **Getting an collection into production** : an ITSM task is forwarded to CSI, and they will create the Collection in this location

iii. *Standards*

1. **Staff** - No advertisements should be applied against this collection
 - a. **Naming convention:** Area identifier ies
2. **Lab** - No advertisements should be applied against this collection.
3. **Development** – One collection per application.
 - a. **Naming convention:** 'DEV PackageName ProgramName'.
I.e. DEV FrontRange ITSM 6.1.4.0: Self Install
4. **Pilot** : CSI are the service owners of this collection
 - a. **Naming convention:** PILOT PackageName: ProgramName
5. **Production** : CSI are the service owners of this collection
6. **Naming convention:** PROD PackageName: ProgramName

the Process:

In the process of Operating System Deployment (OSD) and to distribute software applications to a client or number of clients there are a number of steps, the following may assist you.

OSD and software distribution entails creating a Collection of resources, Packaging and preparing software, place the prepared package on the Distribution Point Server and create an Advertisement. Within QUT you may assume that the Microsoft System Centre Configuration Manager (MS SCCM) internal dependencies have been installed and configured as appropriate for the environment, as have the distribution points.

The software applications have been “packaged” and are available on [\\soe\dsi\prod](#). Now

1. Create a Query

2. Create a collection
3. Create an advertisement

Create a Query:

It is highly recommended that you create your query and spend time adjusting the query to provide the required result before proceeding to creating the collection.

It is best practice to create the query and import it.

Go to “[Using MS SCCM Queries](#)” for assistance if required.

(<https://sharepoint.qut.edu.au/tsl/Technical%20Library/MS%20Windows%207/Using%20MS%20SCCM%20Queries.docx>)

Create a Collection:

A collection represents groups of resources; it can be a single client, or a number of clients within a defined organisational / manageable unit that are the targets for software deployment.

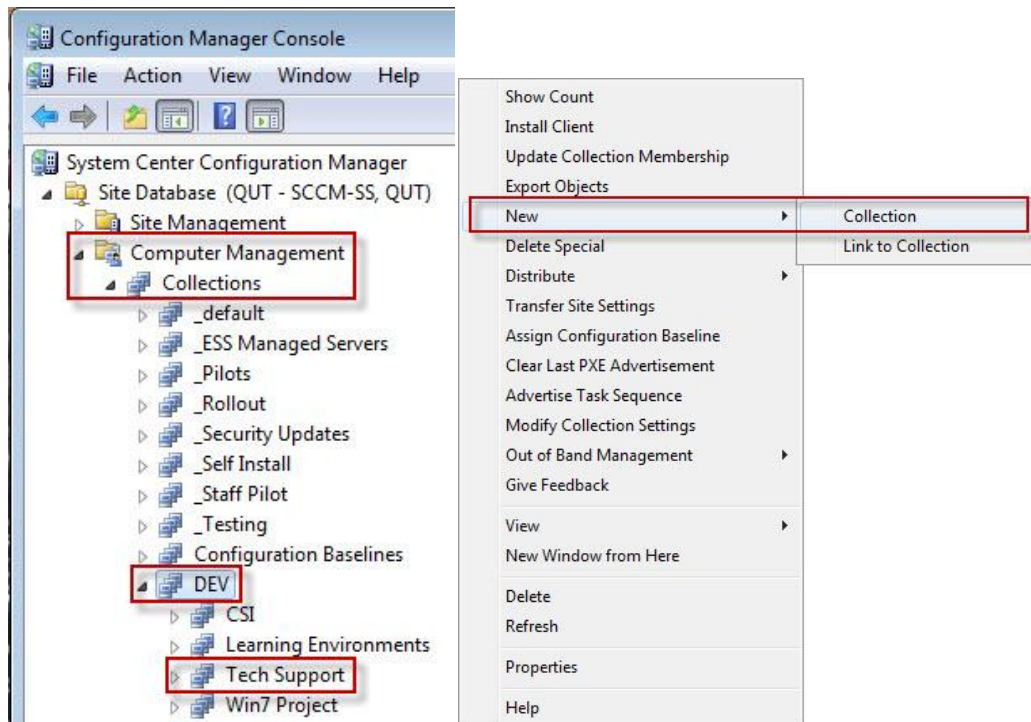
Collections can be query-based or direct membership.

A query-based collection is dynamic and can be updated automatically on a specified schedule. At QUT it is not recommended to update collections on a schedule.

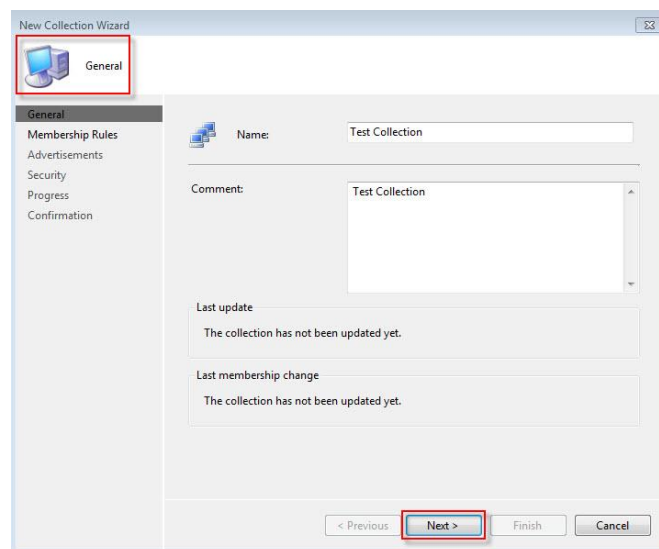
Direct membership collections have the resources added, are updated manually and should be used for temporary or one off distributions. At QUT it is not recommended that this method is used.

Query based collections:-

1. Start MS SCCM in administrator mode using your dash admin account.
2. Expand the “Computer Management” node in SCCM.
3. Expand “Collections”, Expand “DEV”
4. Right Click “Tech Support” select “New” and hover to select “Collection”.



Give your collection representative name and add a comment to clarify the purpose of the collection.
e.g. DEV LE Adobe Flash Pro CS5



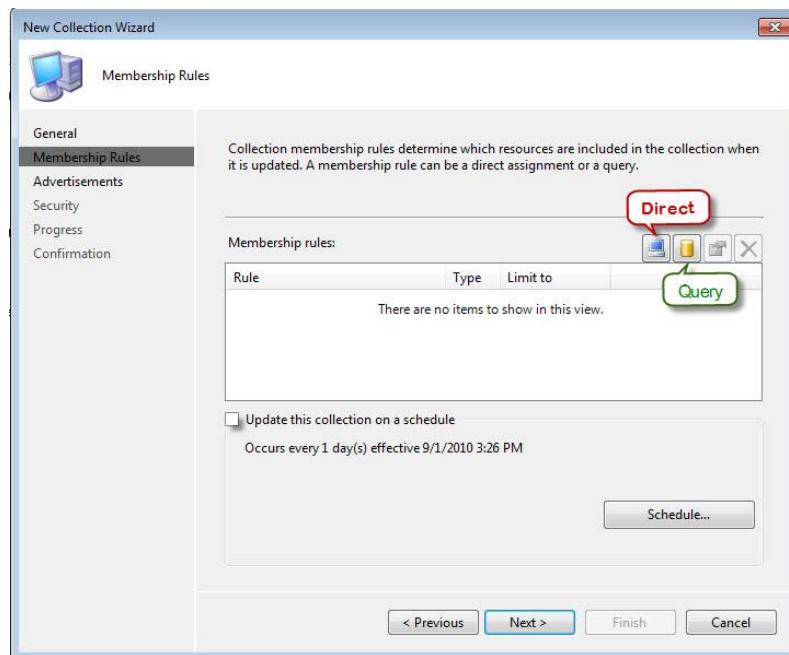
Click **“Next”**

When creating a “Query Based” collection.

Check or uncheck “Update this collection on a schedule” as required.

The QUT default is **UNCHECK**. The reason for this is that over time a large number of queries can be created. When scheduled updating is enabled, these queries will be polling the entire MS SCCM database for information to update. This places a significant load upon the server that is unnecessary and undesirable.

Click on “**Query**”

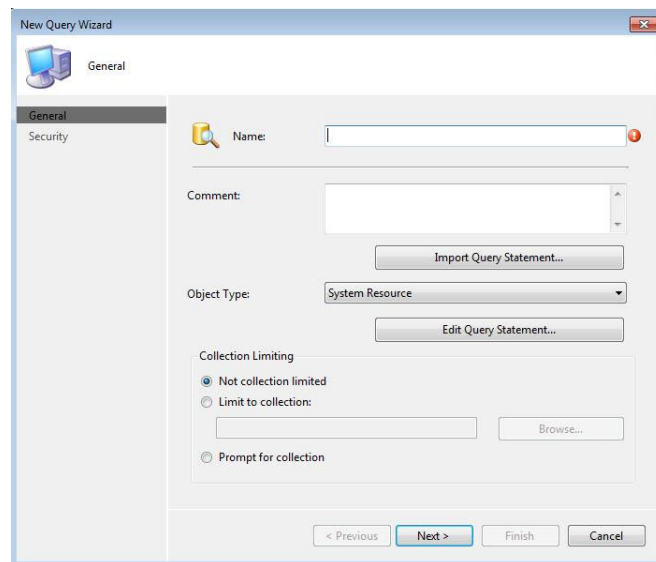


After clicking on Query the following dialogue box will be displayed.

Click on “Import Query.” For a more complete explanation of options available go to ...

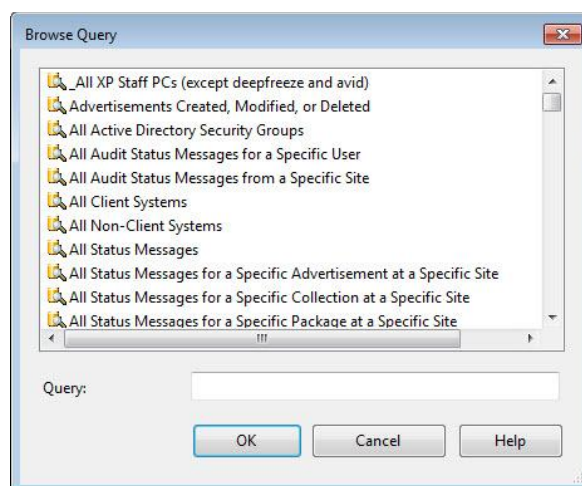
❖ Using MS SCCM Queries

(<https://sharepoint.qut.edu.au/tsl/Technical%20Library/MS%20Windows%207/Using%20MS%20SCCM%20Queries.docx>)



Import Query Statement allows you to import a predefined query. Clicking on this button displays the following dialogue box where you can browse the preconfigured queries.

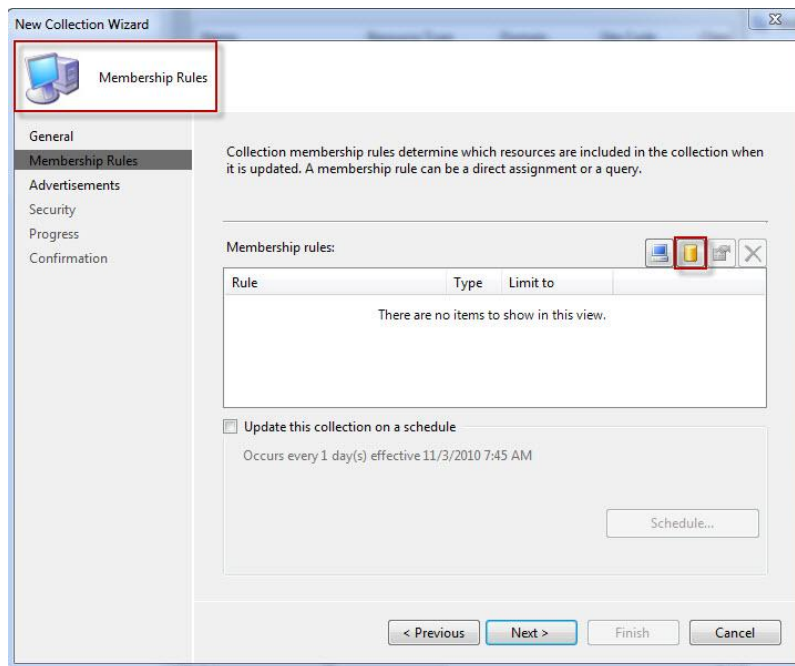
Select the desired query and click **“OK”**



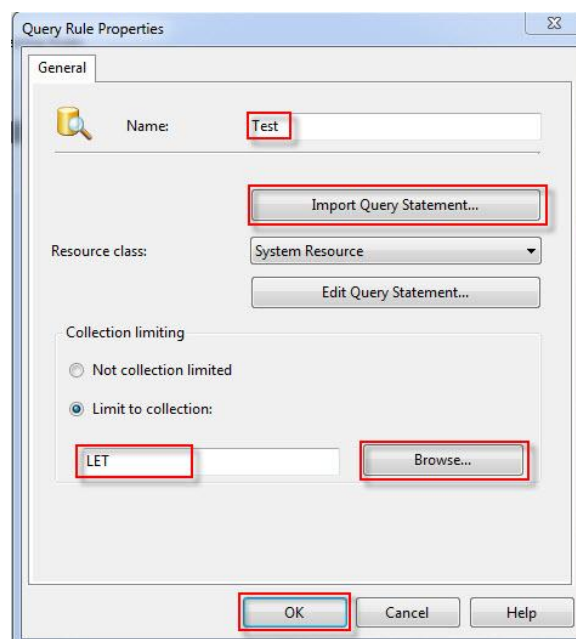
After “OK” the Membership Rules dialogue box will be displayed.

Assign the membership rules for the collection

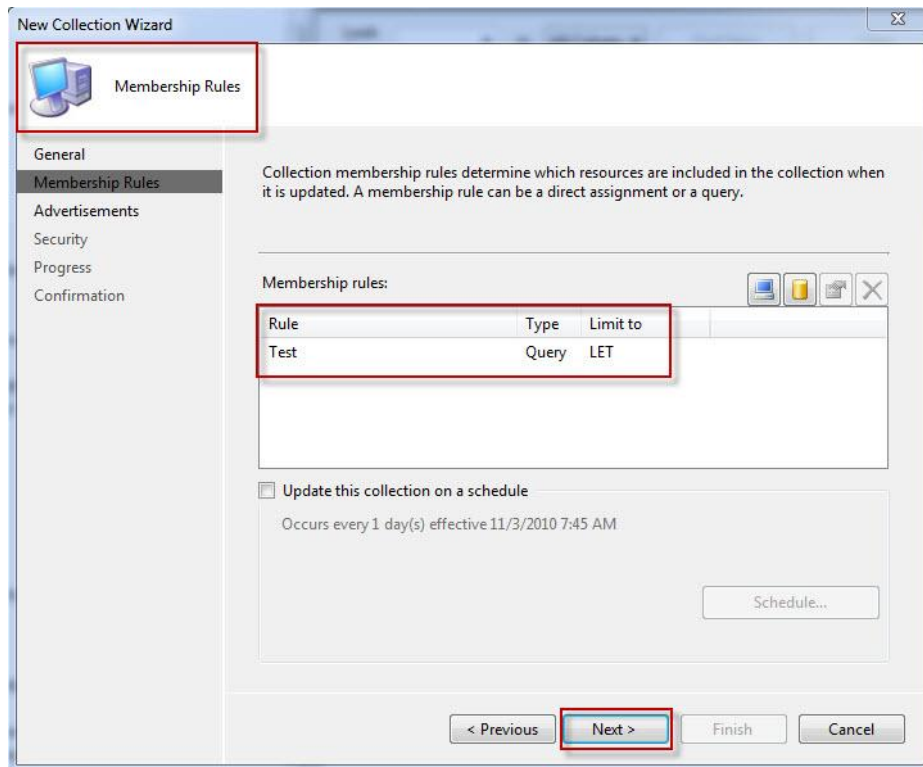
Click on the  in the Membership Rules dialogue box



1. Assign a **Name** to the Rule
2. **Import** the prepared Query
3. **Limit the Collection** to the desired target area
4. Click on “**OK**”



After “OK” the membership rules dialogue box reappears

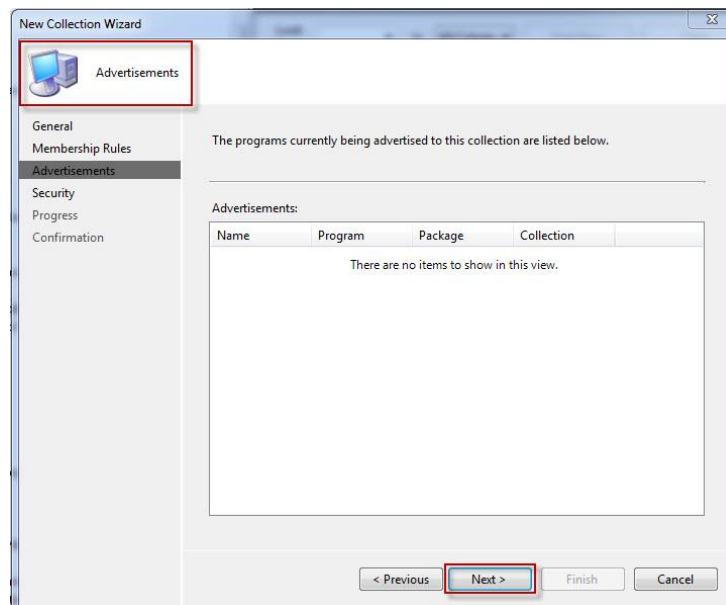


Once the membership rules are assigned
Click **“NEXT”**

The **Advertisements** dialogue box is displayed.

In this dialogue box will be a list of the programs that are being advertised to the selected collection.

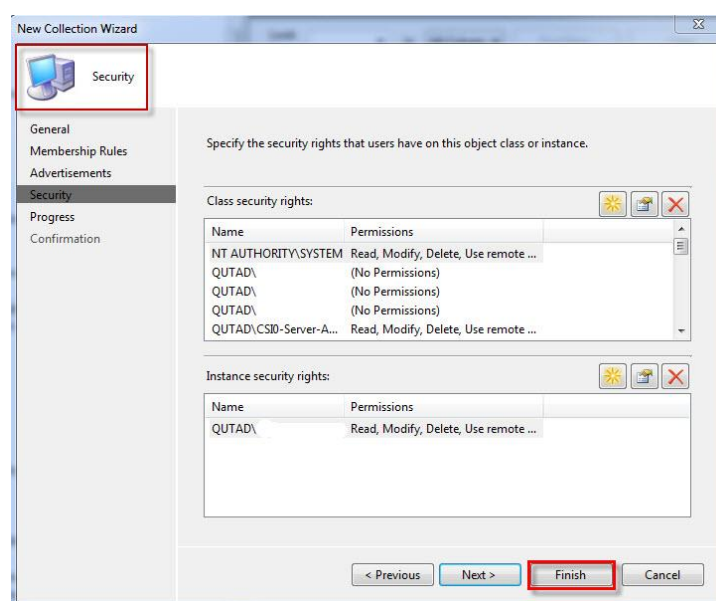
Click **“Next”**



Security IMPORTANT

Once you have completed this wizard you will need to go back into the Package record and modify the security permissions.

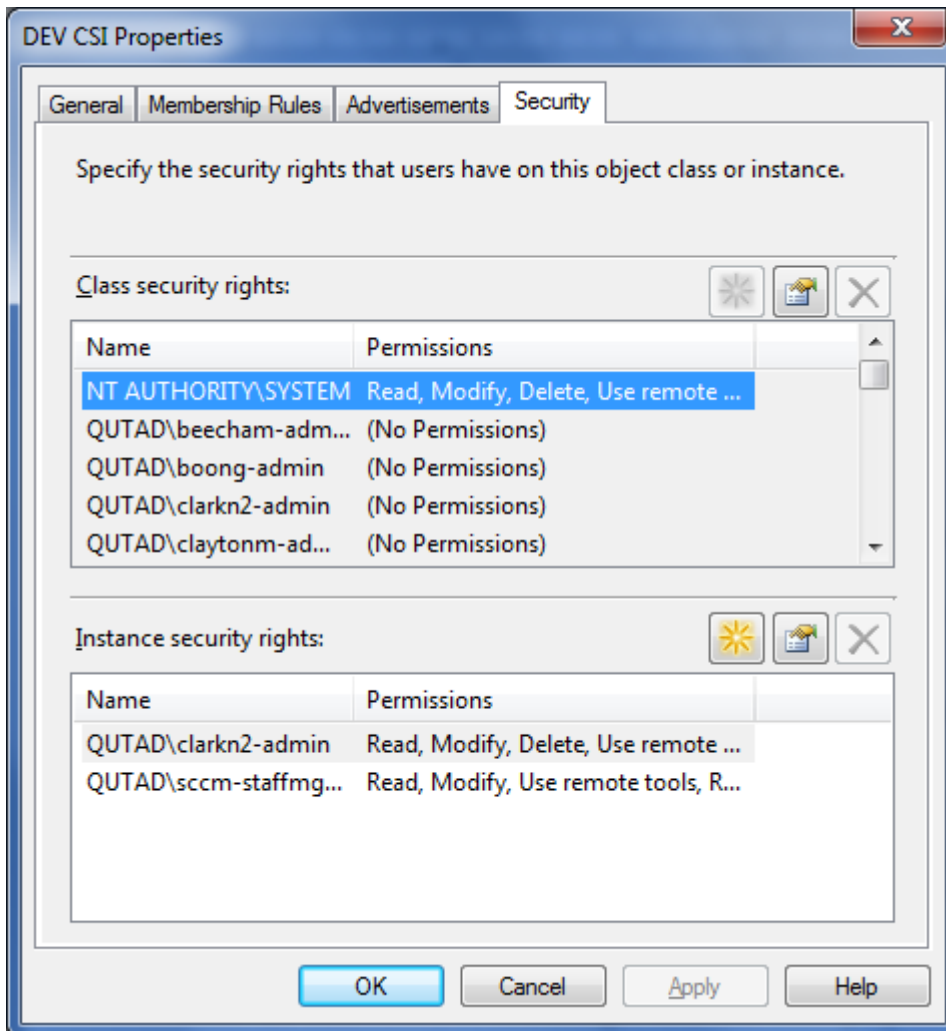
Click **“Finish”**



Security IMPORTANT

Select the collection you just created right click and select properties

Select the security tab



Click  as in the figure above. This displays the figure below.

Grant QUTAD\sccm-labmgmt and QUTAD\sccm-staffmgmt the same security privileges as yourself

Click **“OK”** and OK again

