

# Operating System Deployment (Computer Association)

Prepared by: Vern Beecham

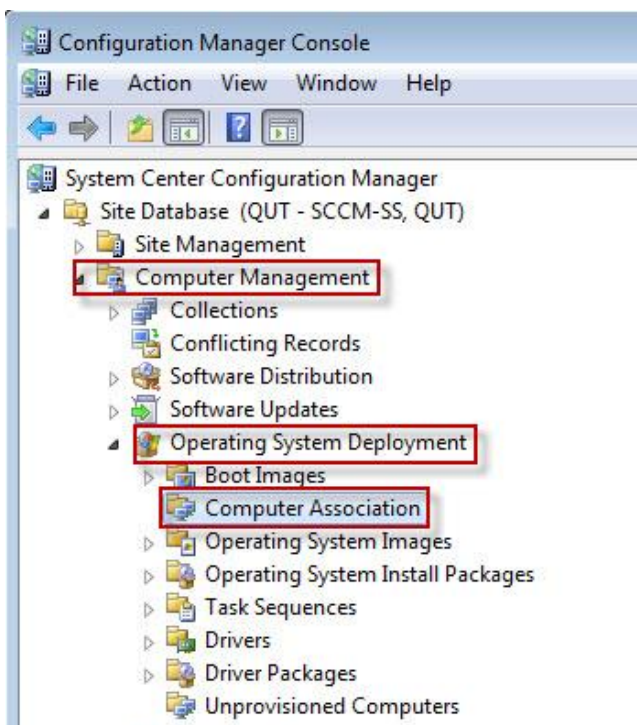
Created: 21 September 2010

In this scenario:

- The Operating System has been packaged and is available on the Distribution Server.
- The PXE server is configured in Configuration Manager and installed on a Windows Deployment Server.
- A Task Sequence, Advertisement and Collection have been created for the target computer and destination.

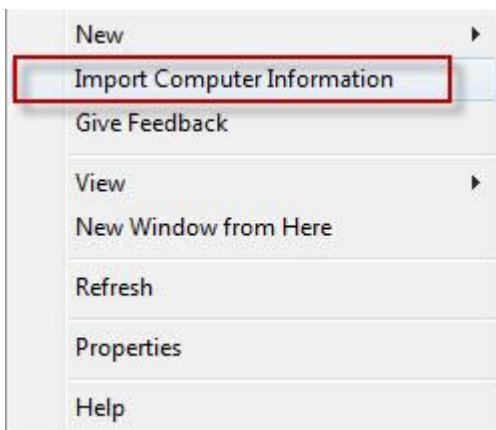
Open your MS SCCM console as an Administrator using your dash (-) admin account.

- Expand “**Computer Management**”
- Expand “**Operating System Deployment**”
- Right Click on “**Computer Association**”



**Right Click “Computer Association”** initiating the following dialogue boxes with “Import Computer Information”

Click on **“Import Computer Information”**

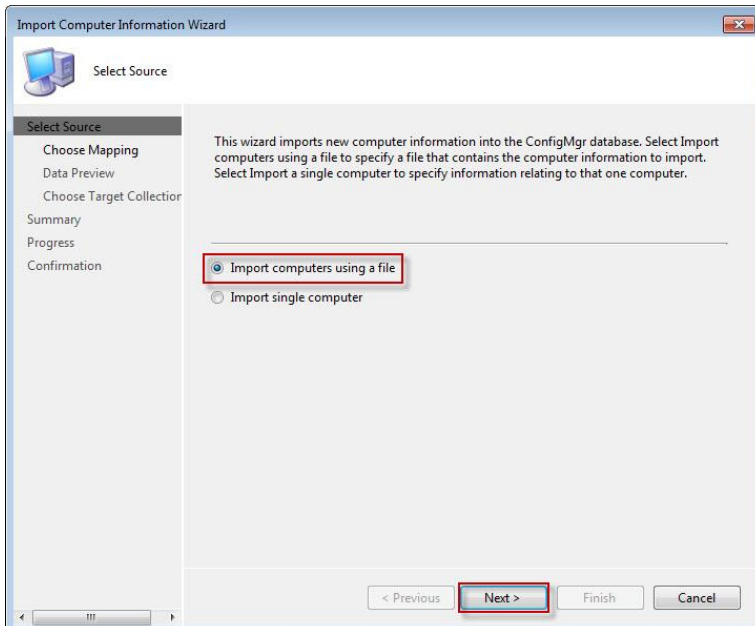


The following dialogue box will be displayed.

When deploying an OS to multiple computers,

- Prepare an Excel spreadsheet with ...
  - The Mac Address on the format 00:00:00:00:00:00
  - The proposed names in accordance with the Naming Convention.

Choose **“Import computers using a file”** Click **“Next”**



This method can be used for a single computer also however, it is more usual for multiple computers.

Import a “CSV” file containing

- the “Computer Name” ([Naming Convention](#)) and either
- the “MAC Address” or “SMBIOS GUID”

Click “**Browse**” and navigate to the location of the CSV file.

Click “**Next**”

The screenshot shows the 'Import Computer Information Wizard' dialog box, specifically the 'Choose Mapping' step. The left sidebar contains a list of steps: 'Select Source', 'Choose Mapping' (highlighted with a red box), 'Data Preview', 'Choose Target Collection', 'Summary', 'Progress', and 'Confirmation'. The main area contains instructions: 'Select import file and assign data contained in each column in the import file to one of the four ConfigMgr properties provided in the Assign as drop-down box. Each ConfigMgr property can be assigned only once. Sample data is displayed from the import file you specify here.' Below this is an 'Import file:' text box with a 'Browse...' button (both highlighted with a red box). A checkbox labeled 'This file has column headings' is checked. A 'File preview:' section shows a table with columns 'Source Column', 'Sample Data', and 'Assign as'. The table is empty, with the text 'There are no items to show in this view.' below it. At the bottom, there are four buttons: '< Previous', 'Next >' (highlighted with a red box), 'Finish', and 'Cancel'. The 'Column:', 'Assign as:', and 'Variable name:' fields are also visible but empty.

In the following dialogue box you have the options to check the tick box “This file has column headings” if appropriate.

The dialogue box confirms the data, assignment, and presents the “Column Options” available. The Column 2 default is SYMBIOS GUID.

Click “**Next**”

**Import Computer Information Wizard**

Choose Mapping

Select Source  
Choose Mapping  
Data Preview  
Choose Target Collection  
Summary  
Progress  
Confirmation

Select import file and assign data contained in each column in the import file to one of the four ConfigMgr properties provided in the Assign as drop-down box. Each ConfigMgr property can be assigned only once. Sample data is displayed from the import file you specify here.

Import file: C:\Users\beecham\Documents\Test Sample.cs Browse...

☒ This file has column headings

File preview:

Source Column	Sample Data	Assign as
Column 1	tils-let-123456	Name
Column 2	00:00:00:00:00:00:00	MAC Address

Column: Column 2

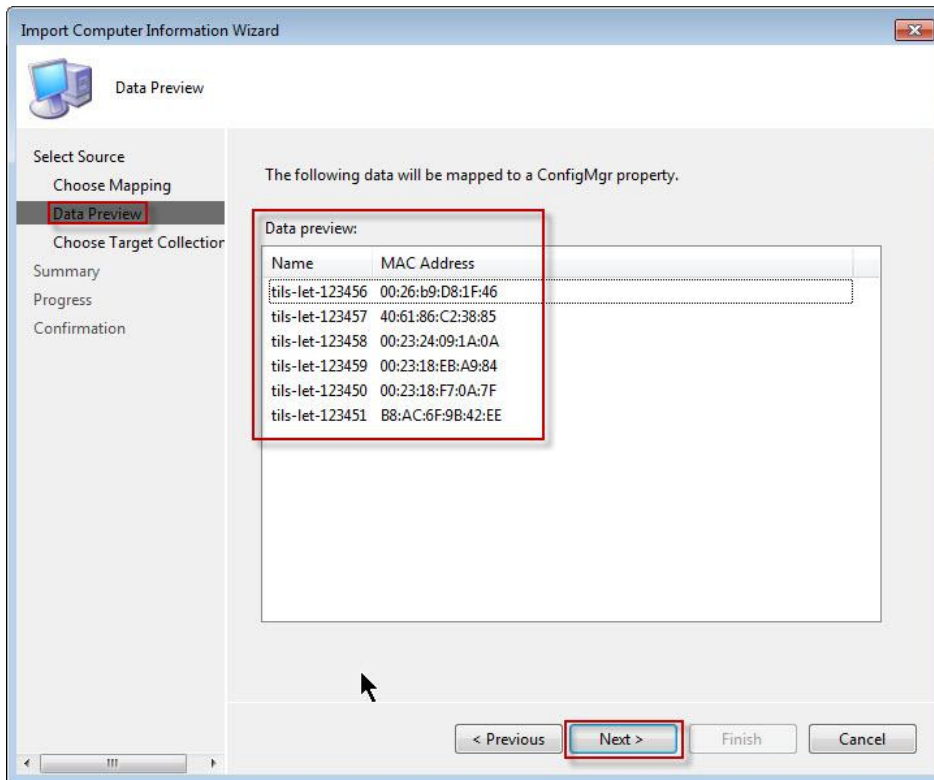
Assign as: MAC Address

Variable name:

< Previous **Next >** Finish Cancel

The Data Preview dialogue box displays the imported data.

Click “**Next**”



You will now be presented with the Add Collection dialogue box. **GO TO Page 8**

.....

The target collection can be any collection that has an associated advertisement of a task sequence relating to the final destination of the computer.

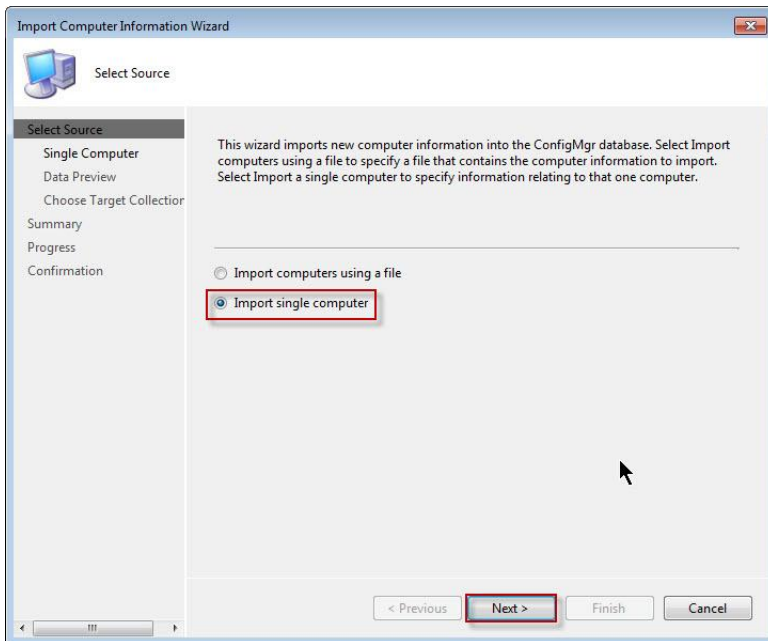
The task sequence will distribute the OS and possibly any other software packages as required by the specified area.

The following is an example of the method used to assign a computer association to a collection. In this example the computer will be associated to a collection that has a task sequence and advertisement to only distribute the MOE.’

.....

When dealing with a “One Off” deployment Choose “**Import single computer**”

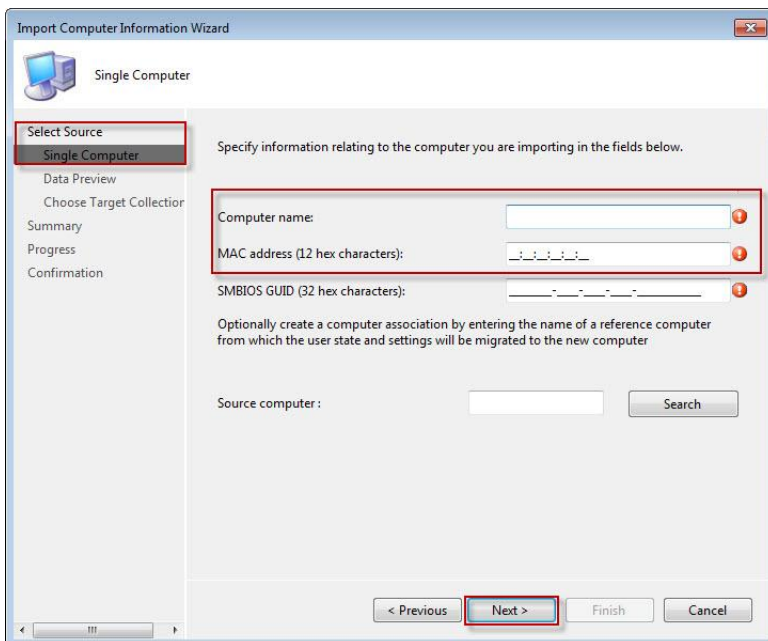
Click “**Next**”



For a single computer deployment enter

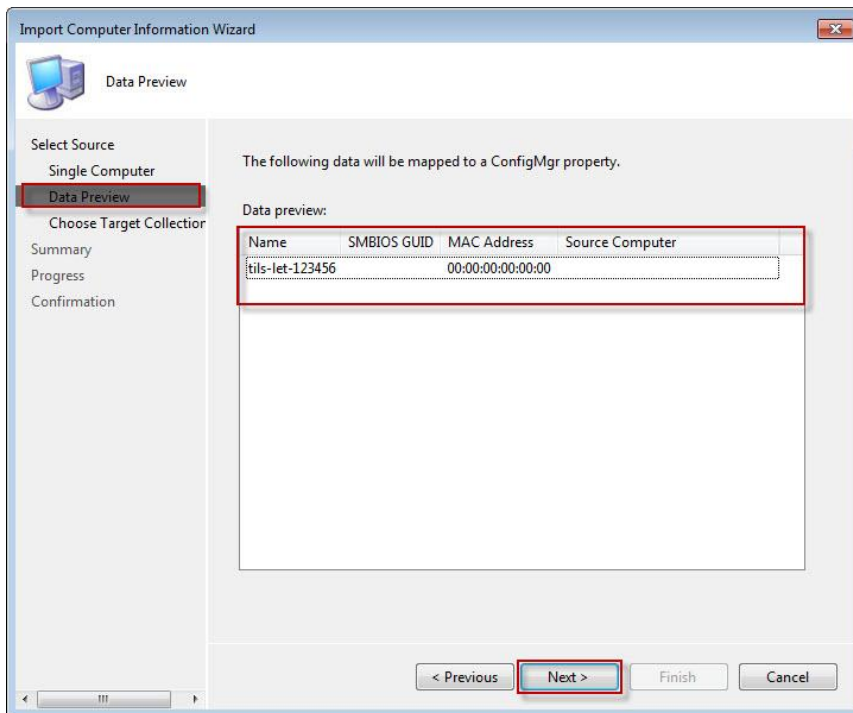
- the “**Computer Name**” and
- either the “**MAC Address**” or the “**SMBIOS GUID**”

Click “**Next**”



Data Preview screen confirms the information entered for the target computer.

Click “**Next**”



The Add Collection dialogue box will now be displayed.

.....

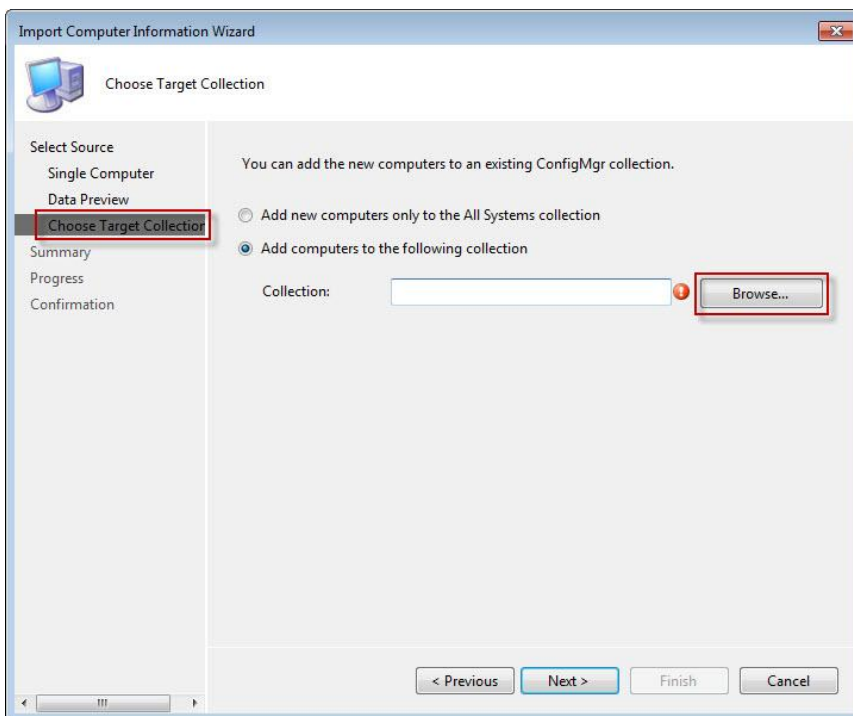
The target collection can be any collection that has an associated advertisement of a task sequence relating to the final destination of the computer.

The task sequence will distribute the OS and possibly any other software packages as required by the specified area.

The following is an example of the method used to assign a computer association to a collection. In this example the computer will be associated to a collection that has a task sequence and advertisement to only distribute the MOE.'

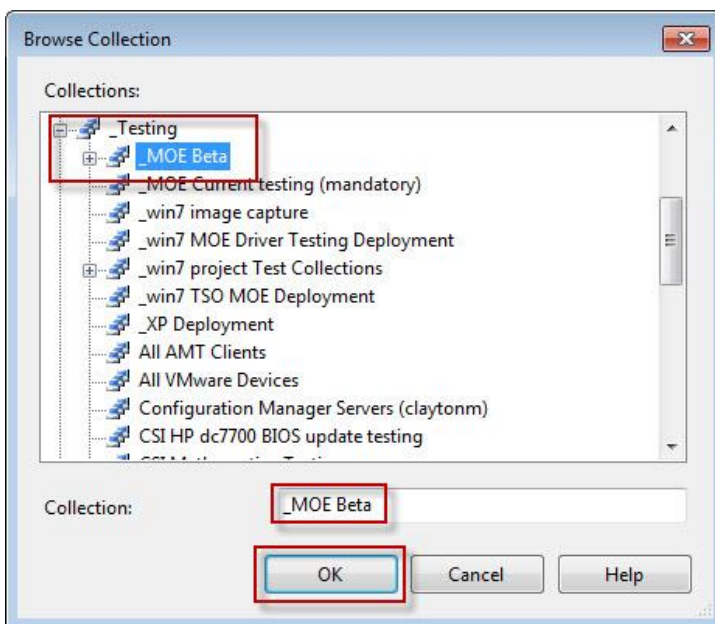
.....

Add the computer to the **appropriate collection**; click “**Browse**”



Navigate to the target “**Collection**”

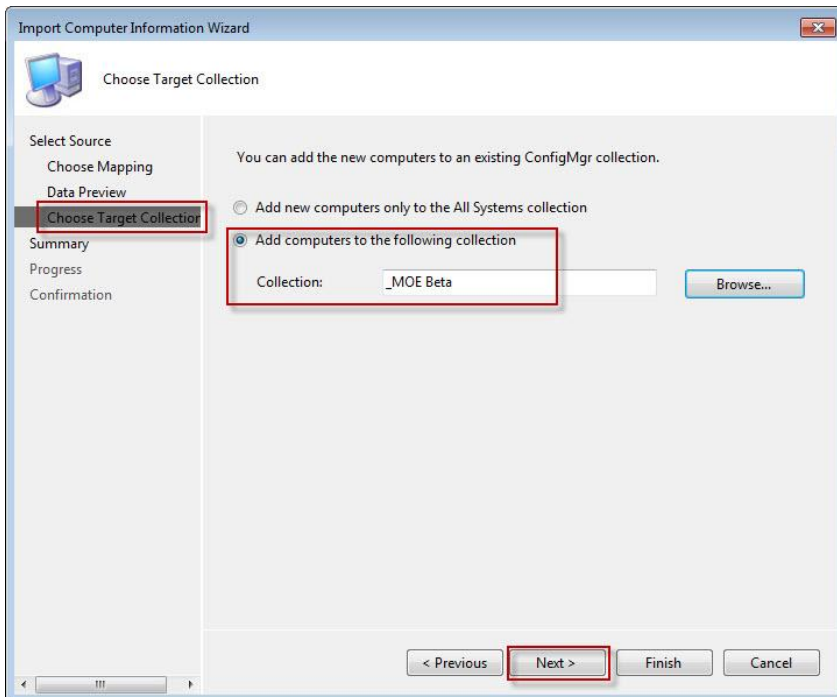
Click “**OK**”





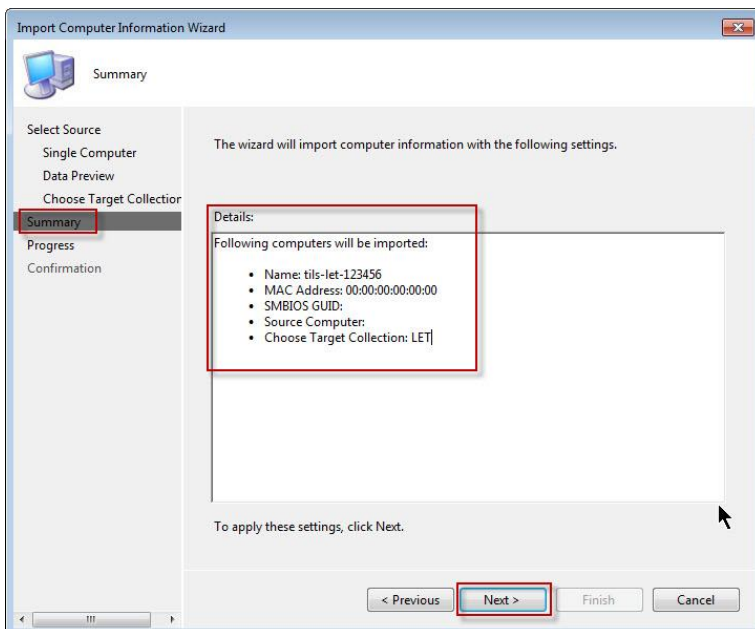
The computer is now added to the target ( MOE ) collection

Click “**Next**”



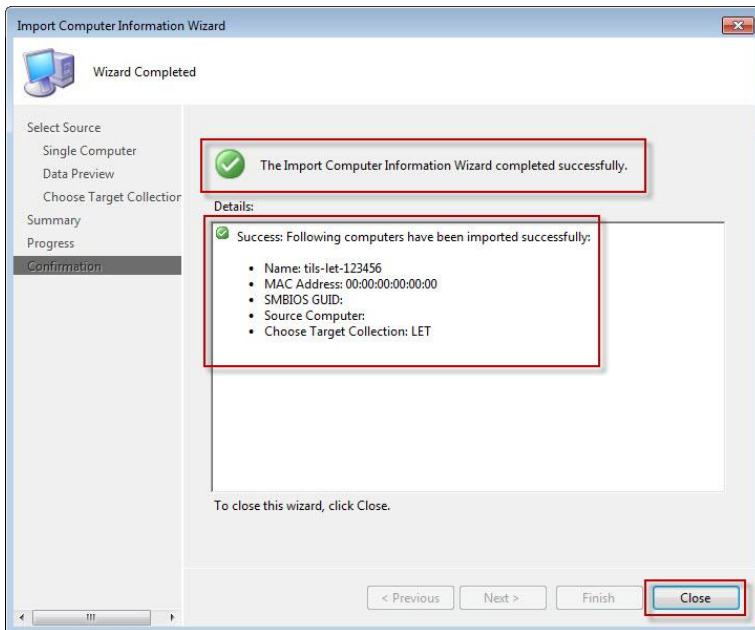
The summary dialogue box appears confirming the choices.

Click “**Next**”



After Next the Confirmation dialogue box is displayed.

Click “Close”



A computer or group of computers has now been successfully added to a collection ready for Operating System Deployment.