

Using Microsoft System Centre Configuration Manager Queries

Prepared by: Vern Beecham

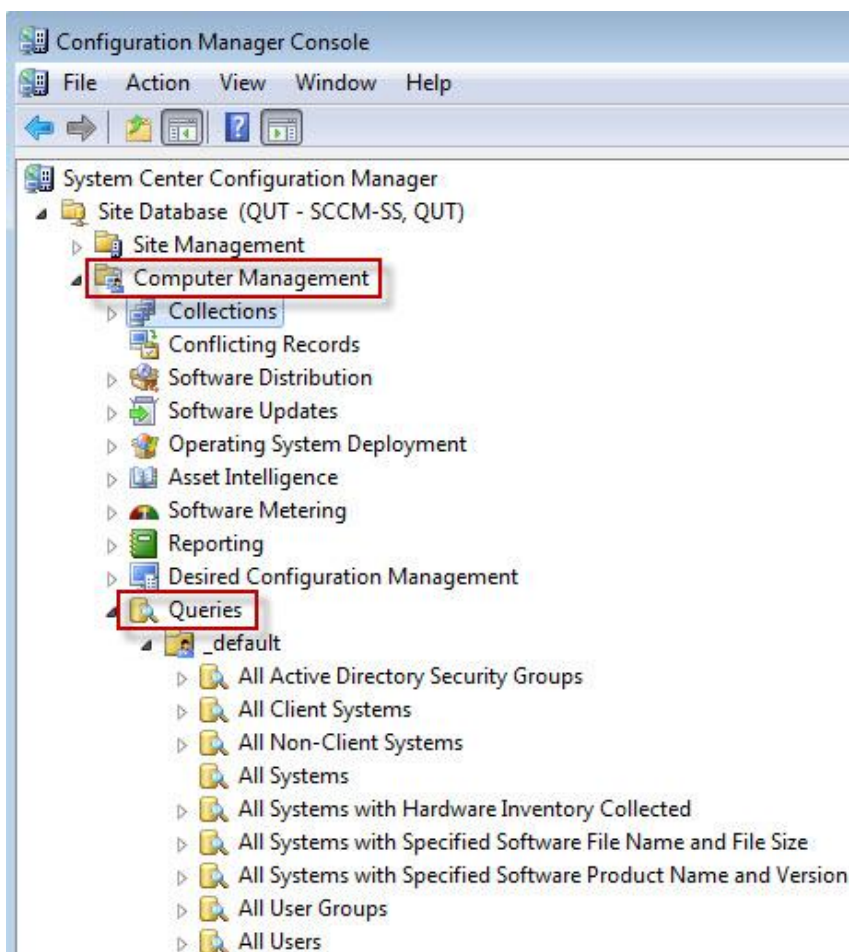
Created: 29 September 2010

A query is a request for information from a database.

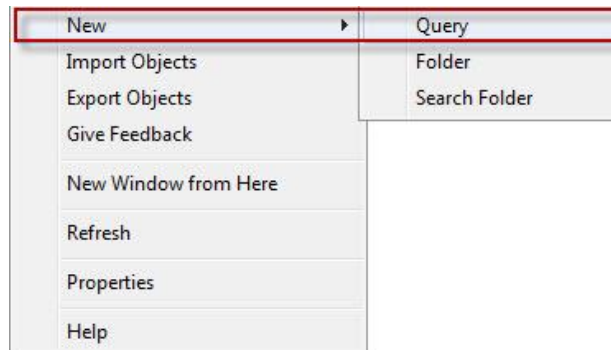
Queries allow you to quickly and easily obtain information about resources from the Microsoft System Centre Configuration Manager (MS SCCM) database. The results can then be exported to other formats e.g. MS Excel to be emailed if required. Queries in MS SCCM are primarily used to create collections that are groups of like resources from MS SCCM or locate a particular resource.

To create a query you need a minimum of two criteria: where to search and what to search for, other criteria can of course be added as required depending upon your needs.

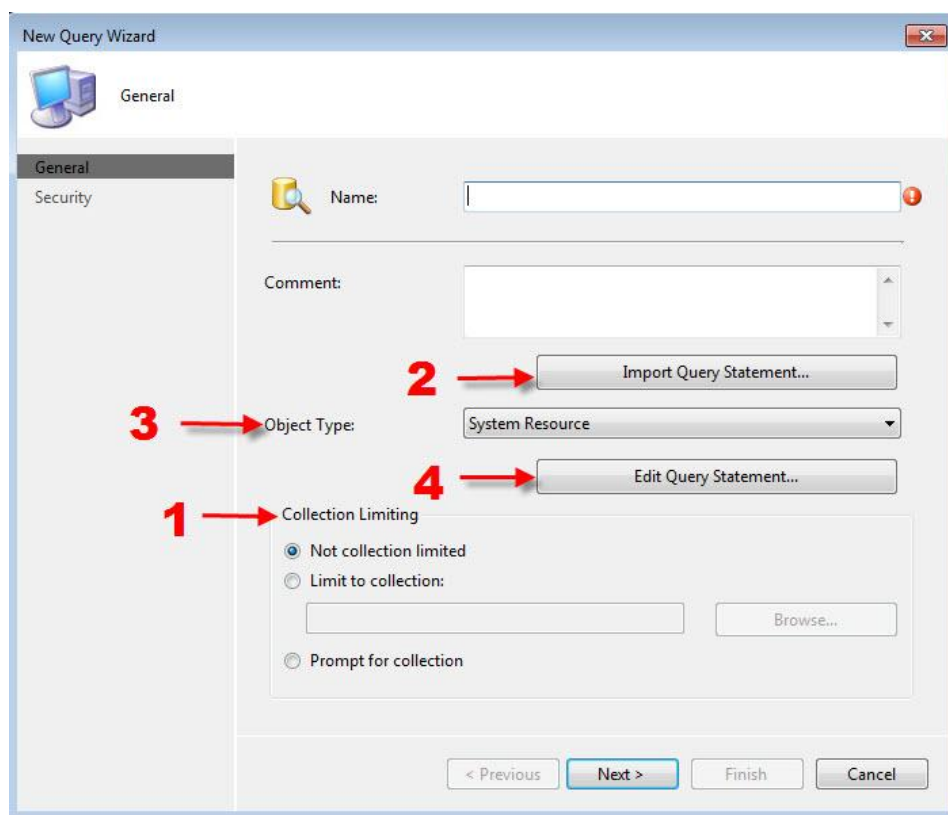
To begin go to **MS SCCM ... Computer Management ... Queries**



To create a new query right click on “**Queries**” the dialogue box below will be displayed follow along and click on “**Query**”



This will display the following dialogue box.



In this dialogue box you will see a number of options. Name and Comment is self explanatory.

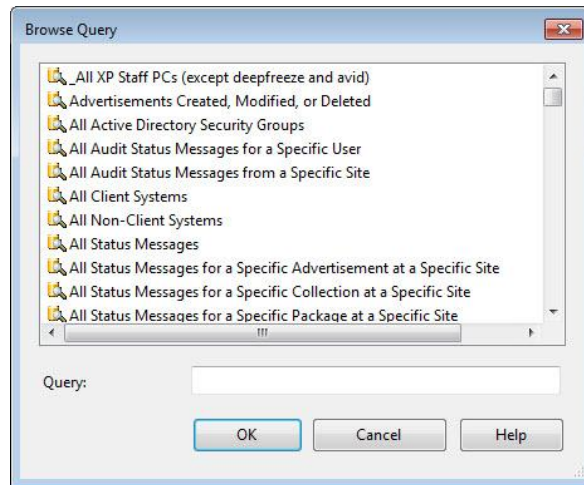
1 Collection Limiting:

“Not collection limited” will search the entire MS SCCM database.

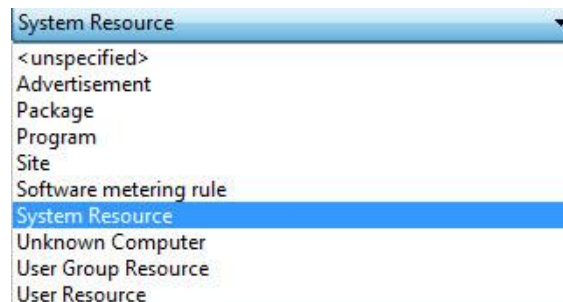
“Limit to collect” allow you to define which collection you wish to search.

“Prompt for collection” Will prompt you for the desire collection later in the process.

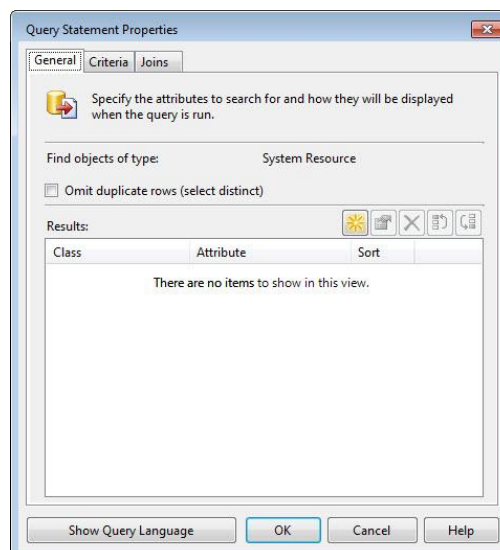
2 Import Query Statement allows you to import a predefined query. Clicking on this button displays the following dialogue box where you can browse the preconfigured queries highlight the desired query and click **"OK"**



3 Object Type expands to reveal the object types. Default is "System Resource" that will return the "Attribute" most commonly required. E.g. Name, Last Logon User Name, etc.

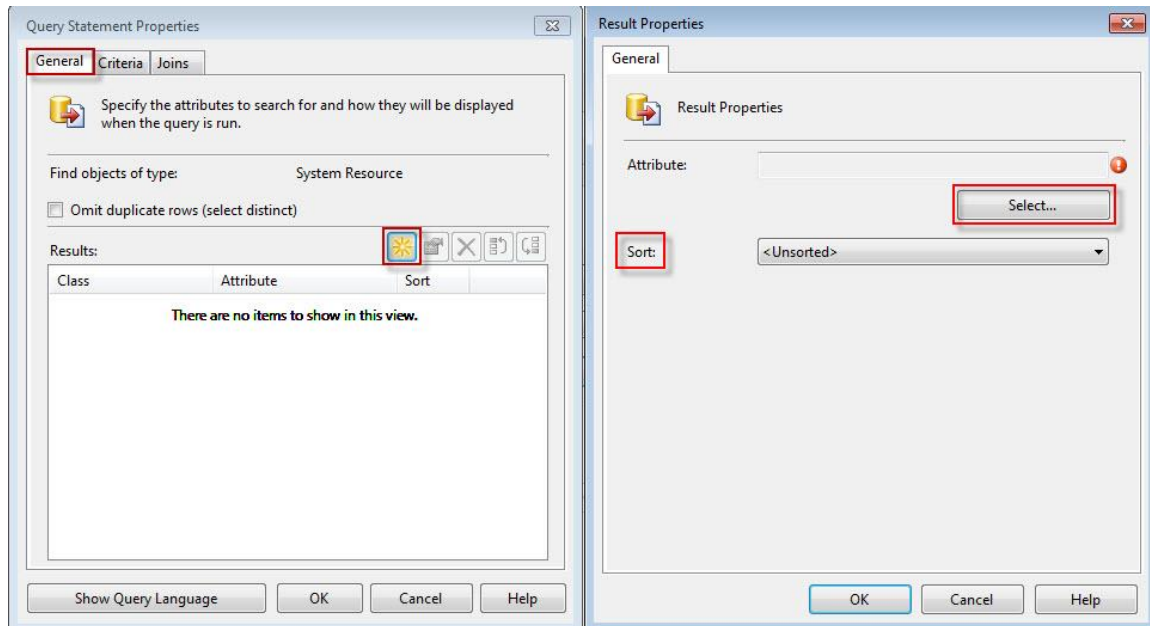


4 Edit Query Statement displays the following that has a number of options available.

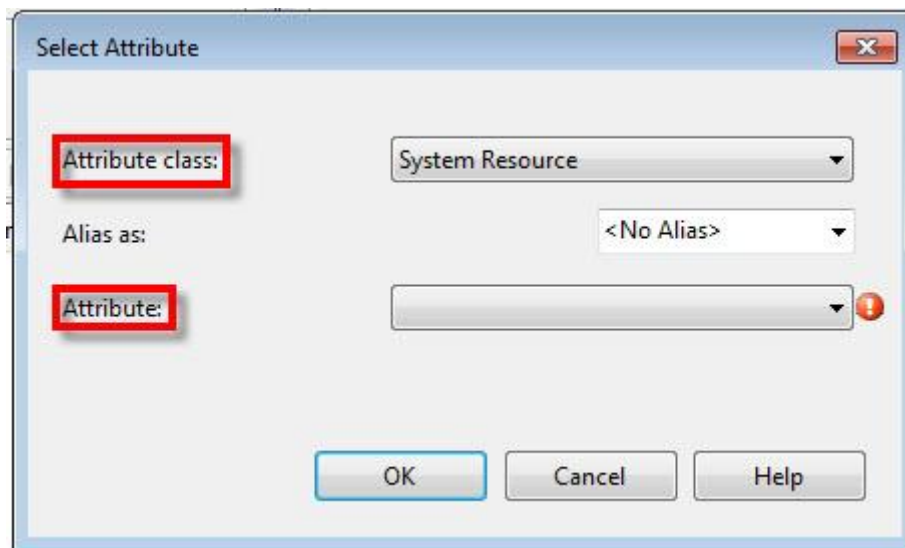


On the “General” tab clicking on the  icon displays the right hand pane.

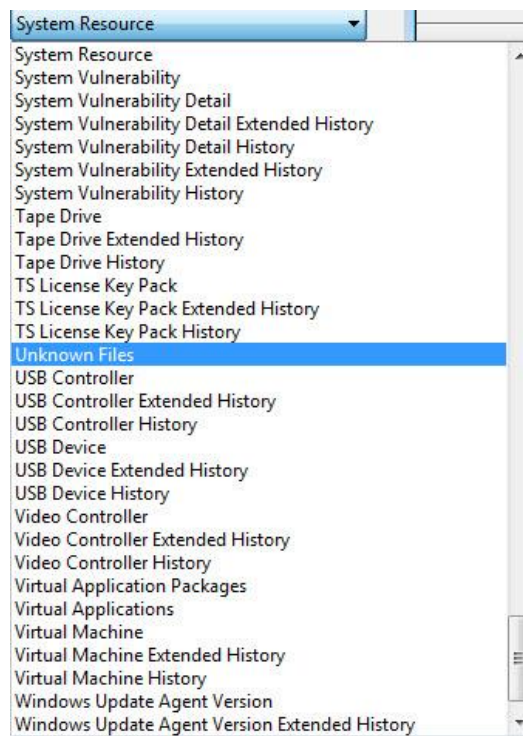
“Sort” expands to give the options “Unsorted”, “Ascending” and “Descending”



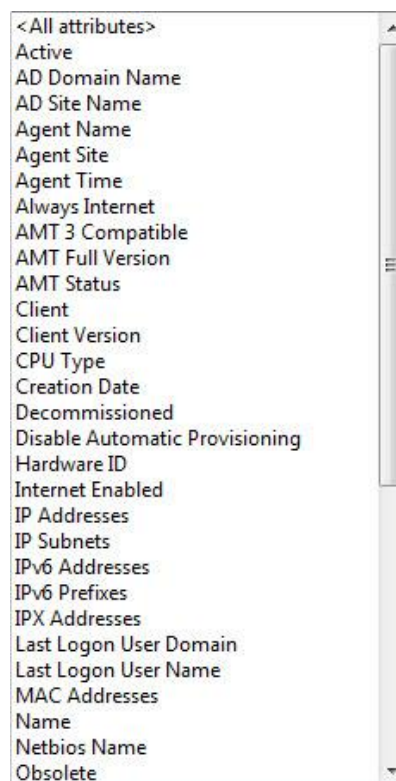
Clicking on “**Select**” (in the dialogue box above) displays the following



Attribute class: expands to multiple options. Default = “System Resource”



Attribute expands to multiple options.

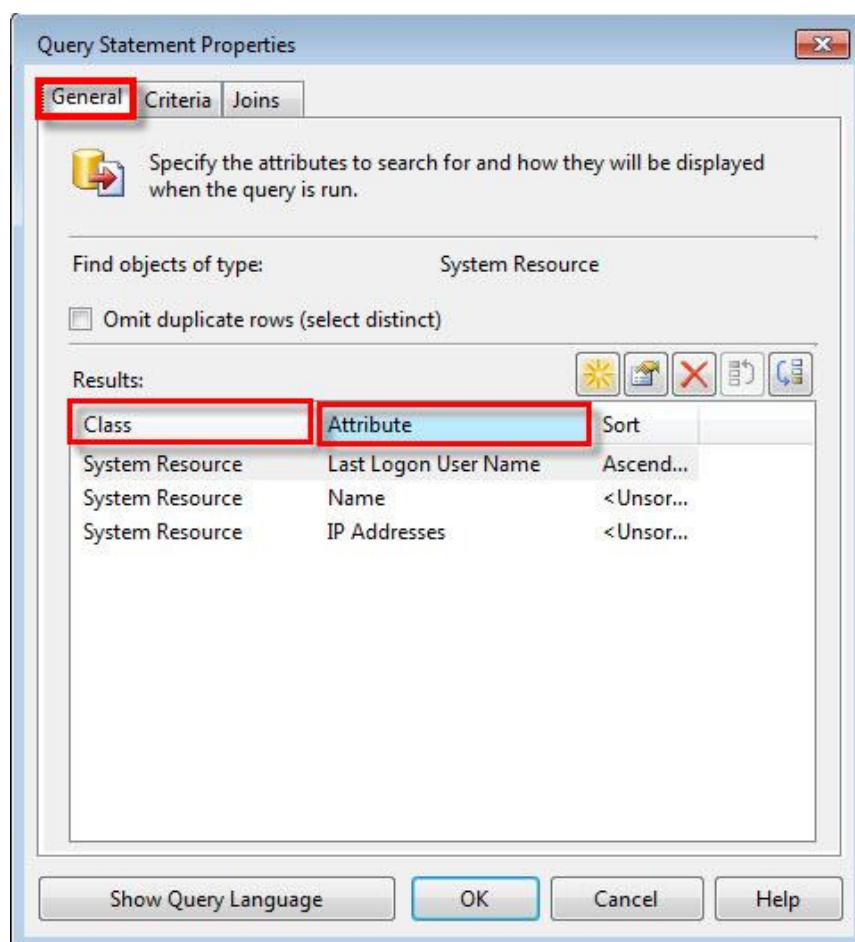


Using SCCM Query

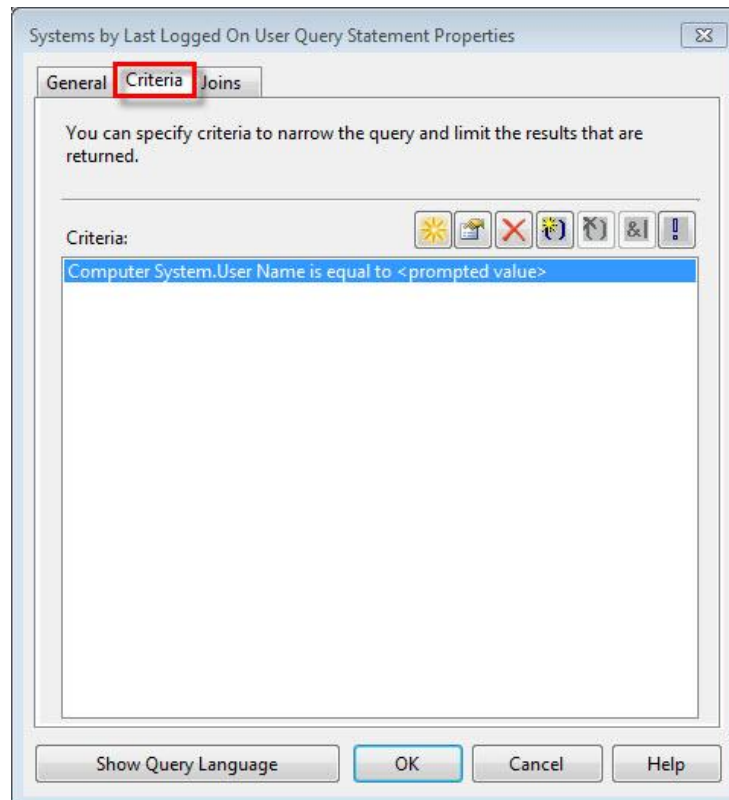
Query is a good start point for familiarisation with MS SCCM as it only returns information and does not make changes to client computers. As there are many predefined queries they are a good learning resource. Begin a new query by importing an existing query statement and examining the context and syntax. Run the query to determine the output; modify and test as required until the desired information is returned.

The image below is the General tab of the imported query “Systems by last logged on user”

You can see that the author has chosen the Attribute Class = System Resource and the Attribute as “Last Logon User Name”, “Name”, “IP Address”

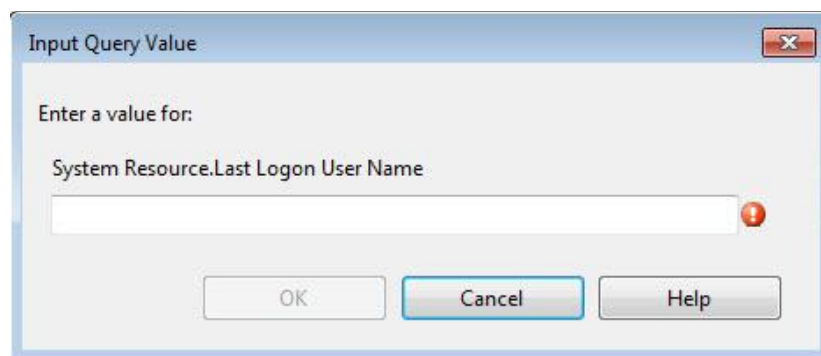


In the criteria tab you can see in this example that only one criterion is set, to a prompted value to accommodate various inputs.



Running this query will give the following dialogue box. Enter a username and “OK” becomes available.

Click on **“OK”**



The result will be a list of pc's where the specified user was the last person logged on.

To save creating new queries with similar attributes and criteria to that of existing queries the simplest method is to copy and edit to give the required result

Go to MS SCCM ... Computer Management ... Queries ... Your area

.....

Please be aware this is not designed to be the definitive resource on this topic.

It is a brief “How to ..” to assist Technical Support Staff.

If you have a constructive comment that will improve this document please email the

[Windows 7 Upgrade Project Team](#)
